

# The Denoised, Deconvolved, and Decomposed Fermi $\gamma$ -ray Sky

## An Application of the D<sup>3</sup>PO Algorithm

Marco Selig<sup>1,2</sup>, Valentina Vacca<sup>1</sup>, Niels Oppermann<sup>3</sup>, and Torsten A. Enßlin<sup>1,2</sup>

<sup>1</sup> Max Planck Institut für Astrophysik (Karl-Schwarzschild-Straße 1, D-85748 Garching, Germany)

<sup>2</sup> Ludwig-Maximilians-Universität München (Geschwister-Scholl-Platz 1, D-80539 München, Germany)

<sup>3</sup> Canadian Institute for Theoretical Astrophysics (60 St. George Street, Toronto, ON M5S 3H8, Canada)

Received DD MMM. YYYY / Accepted DD MMM. YYYY

### ABSTRACT

We analyze the 5.5 year all-sky data from the Fermi Large Area Telescope restricted to  $\gamma$ -ray photons with energies between 0.6–307.2 GeV. Raw count maps show a superposition of diffuse and point-like contributions and are subject to shot noise and instrumental artifacts. Using the D<sup>3</sup>PO inference algorithm, we model the observed photon counts as the sum of a diffuse and a point-like photon flux, convolved with the instrumental beam and subject to Poissonian shot noise. The D<sup>3</sup>PO algorithm performs a Bayesian inference in this setting without the use of spatial or spectral templates; i.e., it removes the shot noise, deconvolves the instrumental response, and yields estimates for the two flux components separately. The non-parametric reconstruction uncovers the morphology of the diffuse photon flux up to several hundred GeV. We present an all-sky spectral index map for the diffuse component. We show that the diffuse  $\gamma$ -ray flux can phenomenologically be described by only two distinct components: a soft component, presumably dominated by hadronic processes, tracing the dense, cold interstellar medium and a hard component, presumably dominated by leptonic interactions, following the hot and dilute medium and outflows such as the Fermi bubbles. A comparison of the soft component to the Galactic dust emission indicates that dust-to-soft-gamma ratio in the interstellar medium decreases with latitude. The hard component exists in a thick Galactic disk and tends to flow out of the Galaxy at some locations. Furthermore, we find the angular power spectrum of the diffuse flux to roughly follow a power-law with an index of 2.45 on large scales, independent of energy. Our preliminary point source catalog includes 2,522 candidates of which we associate 1,269 with known sources from the second Fermi source catalog. We provide upper limit fluxes for galaxy clusters with known radio halos.

**Key words.** methods: data analysis – methods: statistical – techniques: image processing – gamma-rays: general – gamma-rays: diffuse background – catalogs

## 1. Introduction

Since August 2008 the Fermi Gamma-ray Space Telescope has observed the  $\gamma$ -ray sky with its main instrument, the Large Area Telescope (LAT) (Atwood et al. 2009), which is sensitive to photons with energies ranging from around 20 MeV to above 300 GeV.

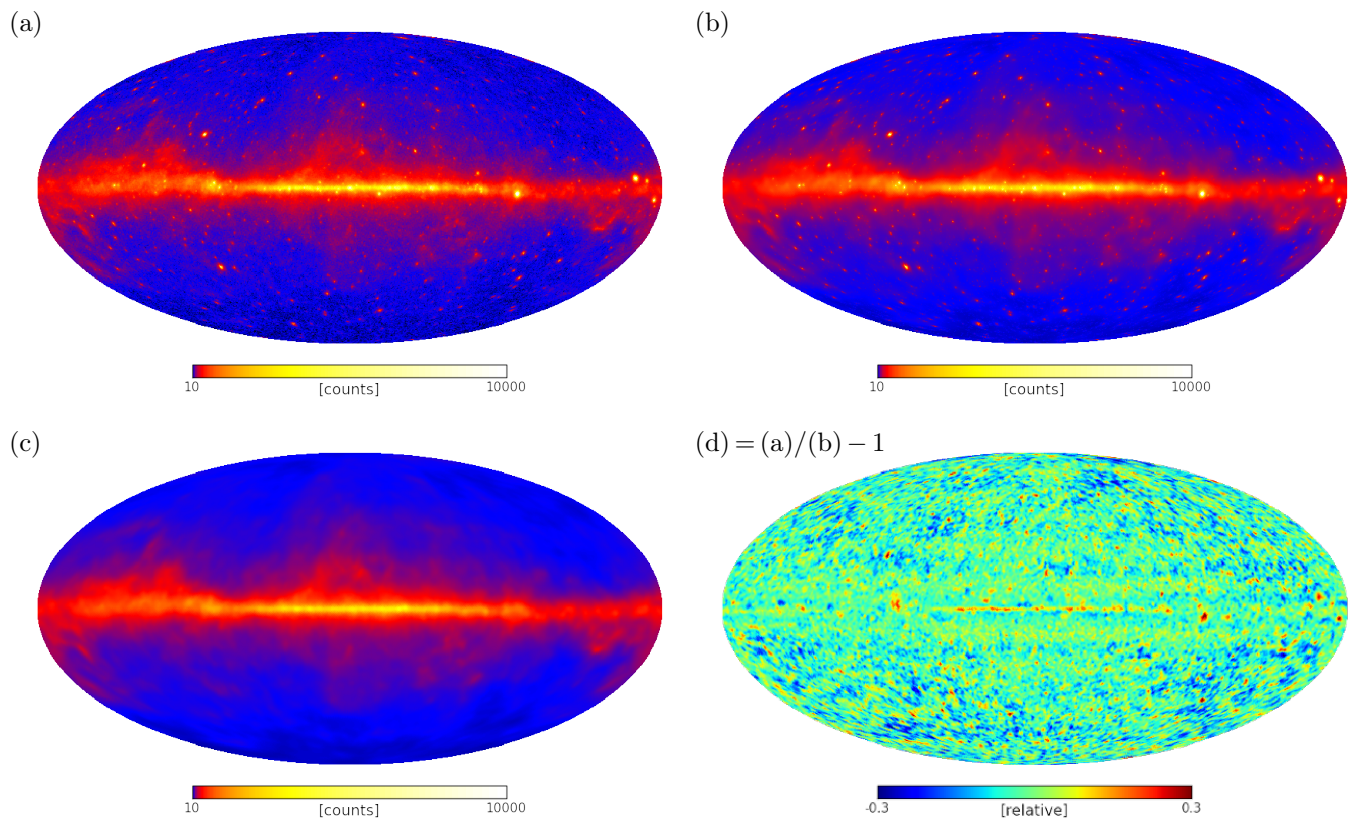
There is a diversity of astrophysical contributions to the total  $\gamma$ -ray flux. Most of the photons in the GeV-range are induced by cosmic rays (CRs), charged particles moving at (ultra-)relativistic speeds, through hadronic interactions of CR nuclei with the interstellar medium (ISM) or inverse Compton scattering (IC) of electrons with background light (Ackermann et al. 2012d; Dermer et al. 2013). In addition, there is emission from an isotropic diffuse background, which is commonly denoted as “extragalactic” background (Dermer 2007, and references therein), and from sources that appear point-like.

The diffuse and point-like  $\gamma$ -ray fluxes appear superimposed to an observer. An observation through an instrument, like the Fermi LAT for example, additionally convolves the total flux with the instrument response functions (IRFs). The gathered data are, lastly, subject to noise; i.e., Poissonian shot noise in the case of integer photon counts.

In order to retrieve the physical photon flux from observations, we would need to reverse those processes. Unfortunately, neither a direct inversion of the convolution nor the separation of noise and signal components is feasible exactly, so that we have to resort to alternative approaches.

One possibility is “forward” modeling, whereby parametrized models of different emission components are fit to the data; e.g., by a maximum-likelihood procedure as suggested by Ackermann et al. (2008) for the analysis of Fermi LAT data. By inspection of residuals between the data and the best fitting model(s), new features might be discovered. A famous example are the *Giant Fermi Bubbles* revealed by Su et al. (2010) using templates. Such templates are commonly constructed in accordance with surveys at lower energies or by modeling of the relevant CR physics (Ackermann et al. 2008; Su et al. 2010; Su & Finkbeiner 2012; Ackermann et al. 2012d, 2014b, and references therein).

In this work, we investigate the “backward” reconstruction of flux contributions using Bayesian inference methods (Bayes 1763; Cox 1946; Shannon 1948; Wiener 1949). The idea is to obtain signal estimates (and uncertainties) from a probabilistic model that denoises, deconvolves, and decomposes the input data. This probabilistic model includes



**Fig. 1.** Illustration of the  $\gamma$ -ray sky seen by the Fermi LAT in Mollweide projection. Panel (a) shows the photon count data of 5.5 years mission elapsed time in the energy range from 0.6 to 307.2 GeV. Panel (b) shows the reconstructed (total) photon flux reconvolved with the LAT’s IRFs. Panel (c) shows only the reconvolved diffuse contribution. Panel (d) shows the fractional residual map smoothed with a  $0.5^\circ$  Gaussian kernel.

prior constraints to remedy the complexity of the inverse problem. Assuming a sparsity based regularization, for example, Schmitt et al. (2010, 2012) proposed an analysis strategy using waveforms, which they applied to simulated Fermi data. For the analysis of X-ray images, which pose the same challenges as  $\gamma$ -ray images, a Bayesian background-source separation technique was proposed by Guglielmetti et al. (2009).

We deploy the D<sup>3</sup>PO inference algorithm (Selig & Enßlin 2013) derived within the framework of information field theory (IFT) (Enßlin et al. 2009; Enßlin 2013, 2014). It simultaneously provides non-parametric estimates for the diffuse and the point-like photon flux given a photon count map. This challenging inverse problem is thereby regularized by prior assumptions that provide a statistical description of the morphologically different components; i.e., the priors define our naive understanding of “diffuse” and “point-like”. D<sup>3</sup>PO considers Poissonian shot noise, without Gaussian approximations, and takes the provided IRFs of the Fermi LAT fully into account. Furthermore, we can retrieve uncertainty information on the estimates.

All this allows us to present a continuous reconstruction of the diffuse  $\gamma$ -ray sky up to around 300 GeV, as well as an estimate of the point-like contribution, from which we derive a preliminary source catalog. By analyzing the spectral behavior of the diffuse component, it is possible to investigate the underlying processes, especially with regard to the CRs responsible for the emission.

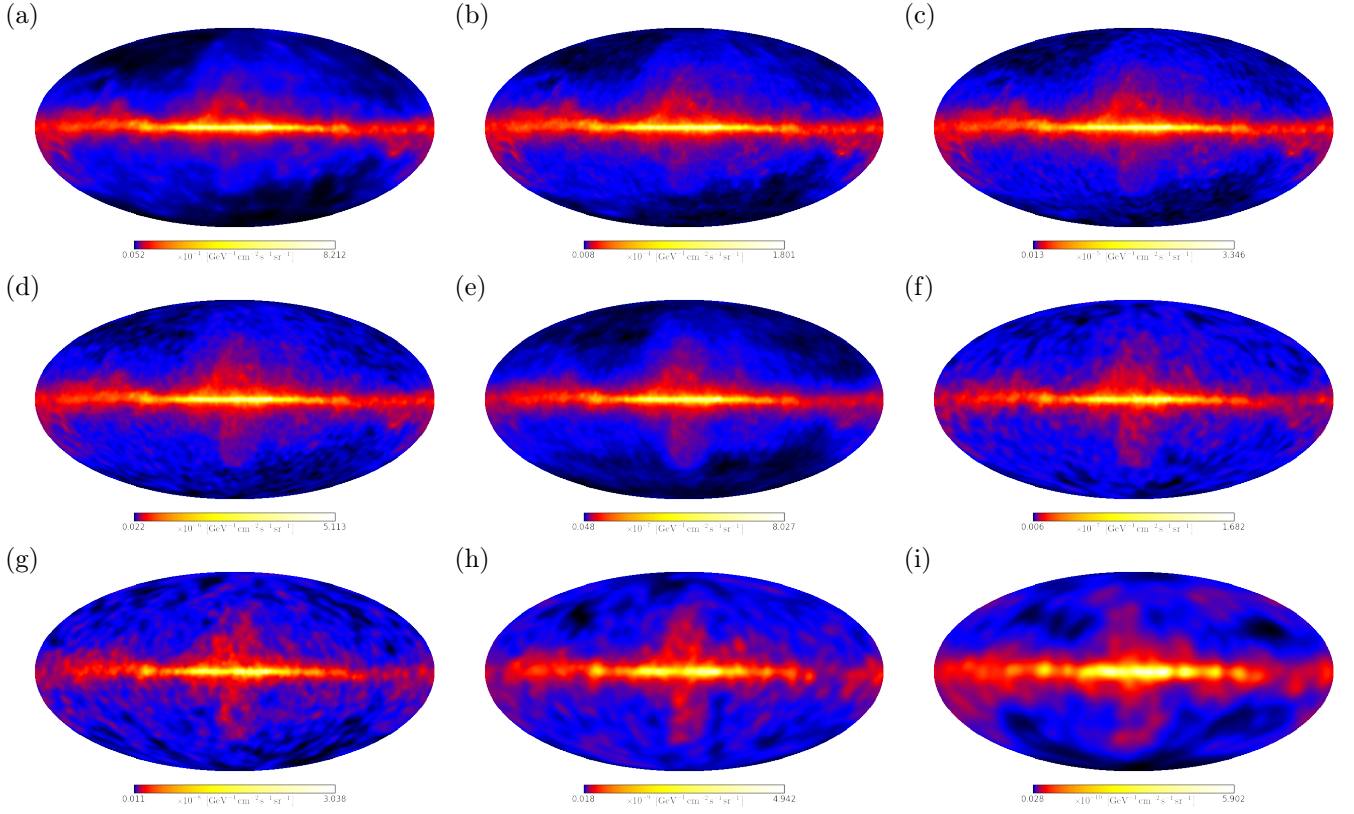
The remainder of this paper is structured as follows. Sec. 2 summarizes the analysis procedure, a more detailed description is given in App. A. We present and discuss our findings in Sec. 3, and conclude in Sec. 4.

## 2. Analysis Summary

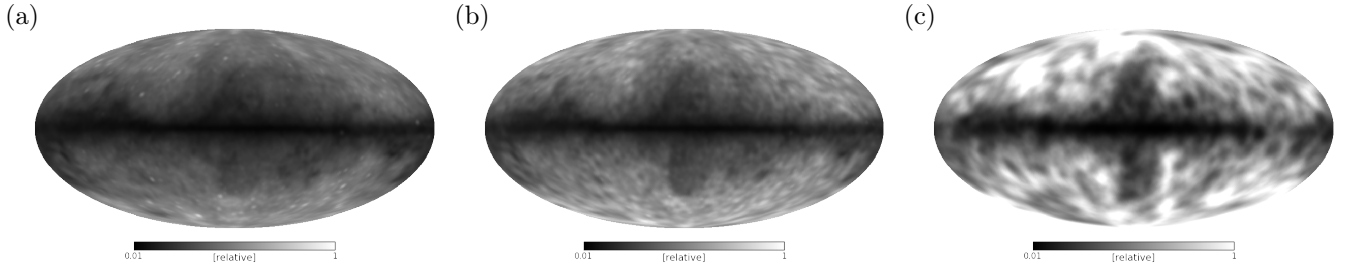
We analyze the photon count data collected by the Fermi LAT within its 5.5 years of operation. All data selection criteria, the working principle of the applied D<sup>3</sup>PO inference algorithm (Selig & Enßlin 2013), and a description of the analysis procedure are detailed in App. A.

In summary, we make use of the reprocessed Pass 7 available within the Fermi Science Tools in order to retrieve the data, as well as the corresponding instrument response functions and exposure of the Fermi LAT (Atwood et al. 2009; Abdo et al. 2009; Ackermann et al. 2012a). We consider nine logarithmically spaced energy bands ranging from 0.6 to 307.2 GeV, cf. Tab. 1. For each band, we spatially bin all events classified as **CLEAN** in count maps, whereby we distinguish the front or back conversion of the photon within the LAT. Throughout this work, we discretize the sky using the HEALPIX scheme with  $n_{\text{side}} = 128$ , which corresponds to an angular resolution of approximately  $0.46^\circ$ .

This data set is the input for the D<sup>3</sup>PO algorithm. In order to denoise, deconvolve and decompose the data, we suppose the data  $\mathbf{d}$  to be the result of a Poisson process



**Fig. 2.** Illustration of the diffuse  $\gamma$ -ray flux on a logarithmic scale at different energies in Mollweide projection. The panels show the reconstructed diffuse photon flux for energy bands 1–9, cf. Tab. 1. The photon flux is given in units of  $\text{GeV}^{-1}\text{cm}^{-2}\text{s}^{-1}\text{sr}^{-1}$ . Notice that the color scale varies.



**Fig. 3.** Illustration of the relative reconstruction uncertainty on a logarithmic scale at different energies in Mollweide projection. The panels show the relative uncertainty on the reconstructed diffuse photon flux at  $\sim 2$  GeV,  $\sim 8$  GeV,  $\sim 100$  GeV corresponding to panels (b), (d), and (h) in Fig. 2. The uncertainties for all energy bands are contained in the online material.

with an expectation value given by the convolved sum of the diffuse and point-like flux,  $\phi^{(s)}$  and  $\phi^{(u)}$ ; i.e.,

$$d \sim \mathcal{P}(d | \mathbf{R}(\phi^{(s)} + \phi^{(u)})), \quad (1)$$

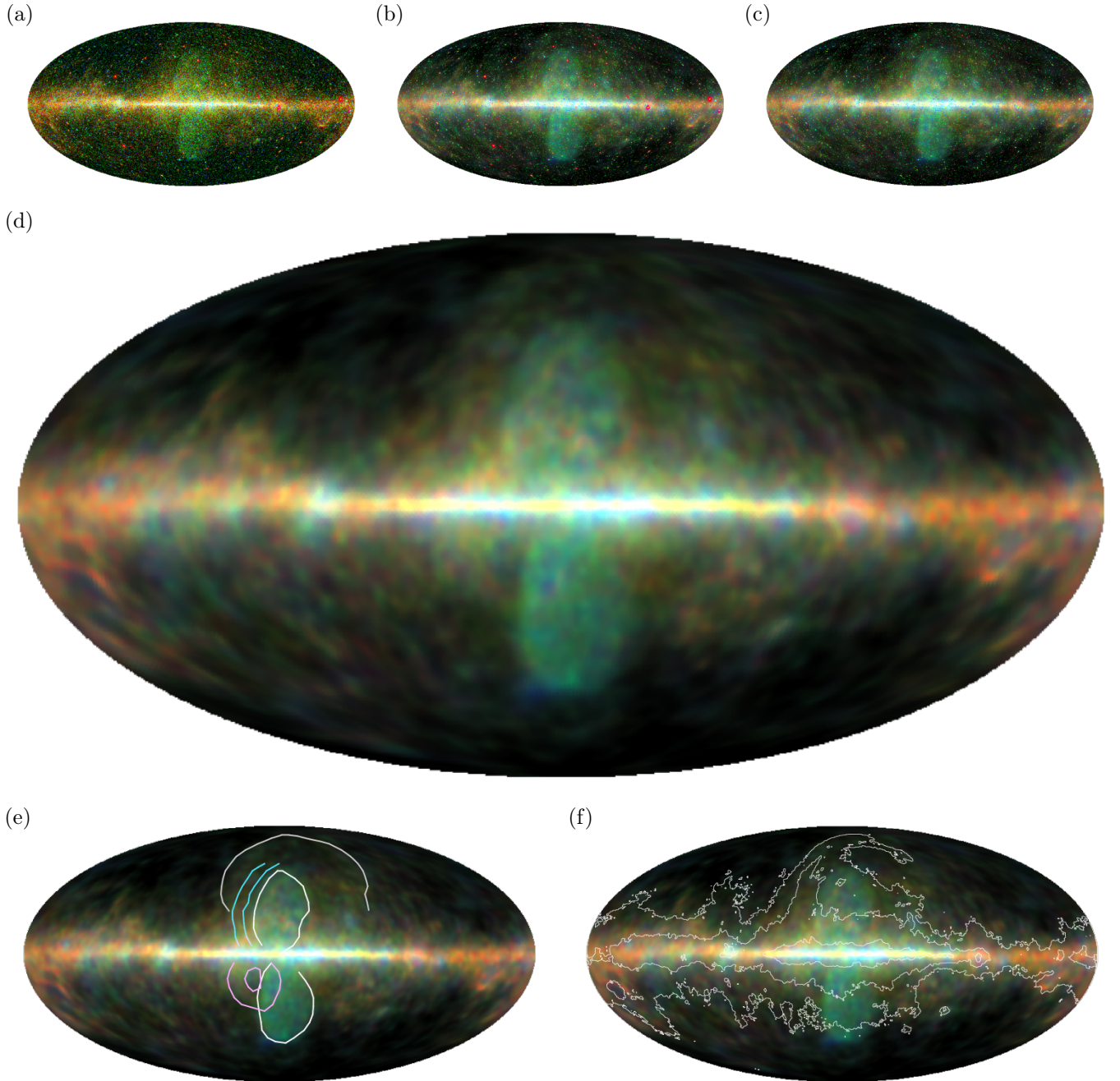
**Table 1.** Overview of the energy binning. Listed are minimum, logarithmic mean, and maximum energy for each bin.

band	$E^{\min}$ [GeV]	$E^{\text{mid}}$ [GeV]	$E^{\max}$ [GeV]
1	0.60	0.85	1.20
2	1.20	1.70	2.40
3	2.40	3.40	4.80
4	4.80	6.79	9.60
5	9.60	13.58	19.20
6	19.20	27.15	38.40
7	38.40	54.31	76.80
8	76.80	108.61	153.60
9	153.60	217.22	307.20

where the operator  $\mathbf{R}$  describes the full instrument response of the LAT. Under this model assumption, and with the aid of prior regularizations, D<sup>3</sup>PO computes estimates for the photon fluxes. The inference is performed iteratively until convergence and for each energy band separately. Further details regarding the inference can be found in App. A.

The results of this analysis – including, among others, the reconstructed fluxes, uncertainties, and the preliminary D<sup>3</sup>PO Fermi (pDF) catalog of source candidates – are publicly available at <http://www.mpa-garching.mpg.de/ift/fermi/>.





**Fig. 4.** Illustration of the  $\gamma$ -ray sky in pseudocolor in Mollweide projection. Panel (a) shows the 5.5 year data. The panels (b) and (c) show the reconstructed (total) photon flux that in (b) is reconvolved with the IRFs. Panel (d) shows the reconstructed diffuse photon flux. The panels (e) and (f) reproduce the latter but are overlaid with the feature contours found by Su et al. (2010) (white: *Giant Fermi Bubbles*, light magenta: *Donut*, light blue: *North Arc*, light gray: *Radio Loop I*) and contours of the 408 MHz radio map from Haslam et al. (1982), respectively.

### 3. Results & Discussion

#### 3.1. The $\gamma$ -ray Sky

The Fermi LAT has detected millions of  $\gamma$ -ray photons within the first 5.5 years of its mission. We can stack them in a binned all-sky count map disregarding the energy of the photons.

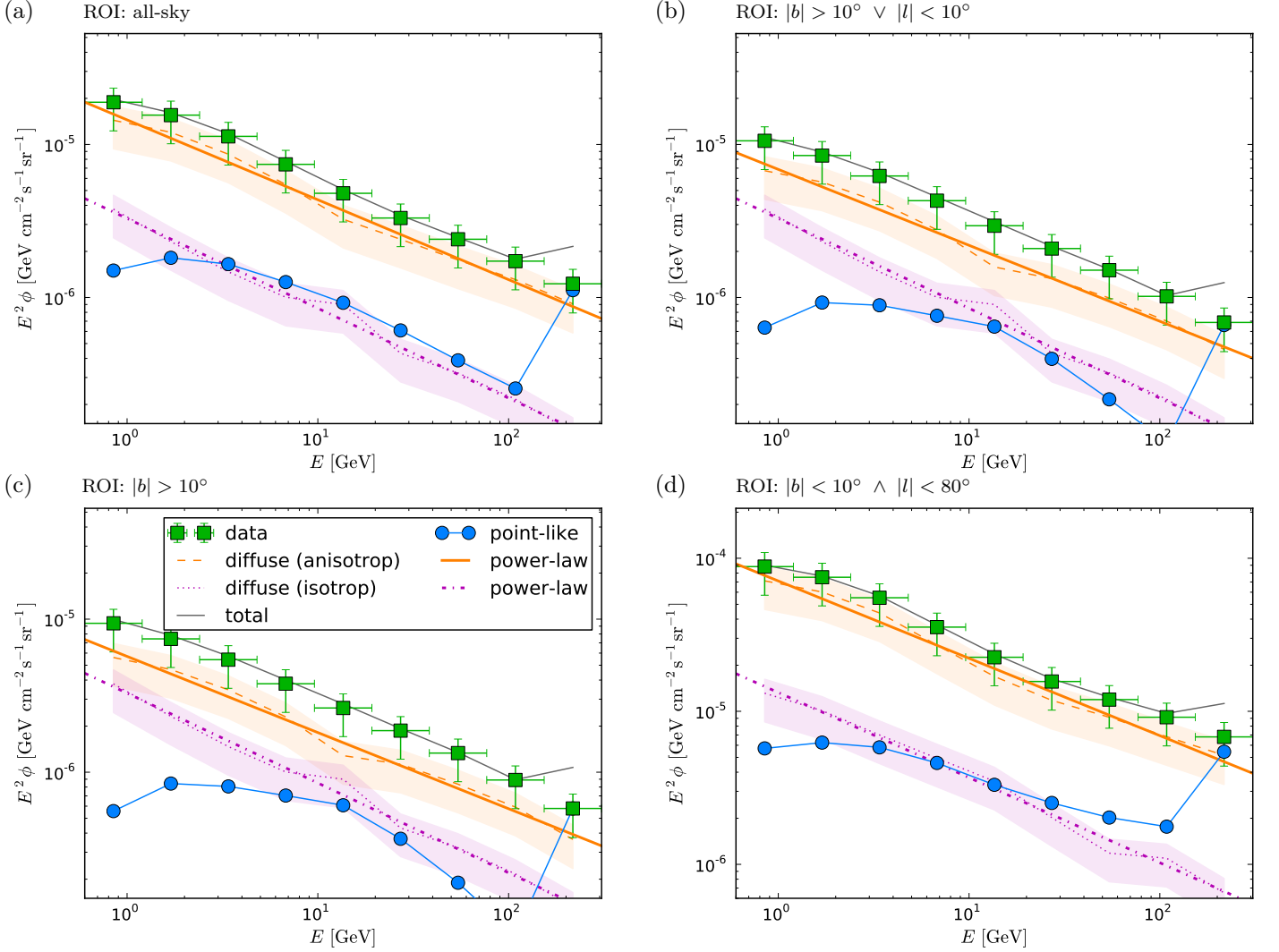
Figure 1 shows such all-sky maps for the stacked data and the result of the reconstruction. D<sup>3</sup>PO denoises, deconvolves, and decomposes photon count maps yielding a reconstruction of the diffuse and point-like photon flux. A

reconvolution of the reconstructed  $\gamma$ -ray flux with the instrument response functions demonstrates the quality of the performed denoising; i.e., the removal of Poissonian shot noise.

The fractional residual exhibits no significant structures and the mean of its absolute value is below 6%.<sup>1</sup> As we compare the data with a denoised reproduction, the major difference is due to shot noise. We observe a weak ringing around the Galactic plane, which is a numerical ar-

<sup>1</sup> If we approximate the Poissonian  $\mathcal{P}(\mathbf{d}|\boldsymbol{\lambda})$  by a Gaussian  $\mathcal{G}$  with mean  $\boldsymbol{\lambda}$  and variance  $\text{diag}[\boldsymbol{\lambda}]$ , we can expect the mean of

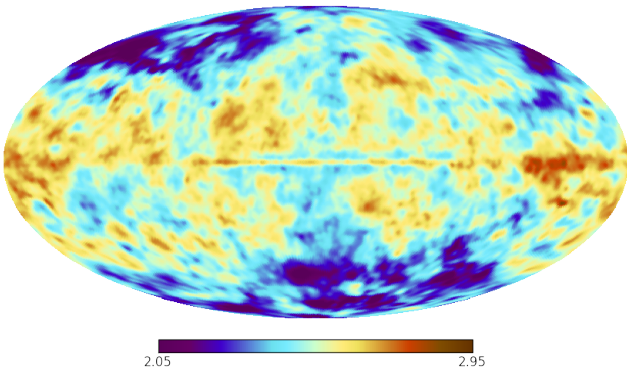




**Fig. 5.** Illustration of energy spectra considering different ROIs. The legend in panel (c) applies to all other panels. Shown are the data (green squares) converted to flux units, and spectra from the reconstructed total (gray), anisotropic diffuse (dashed orange), isotropic diffuse (dotted magenta), and point-like photon flux (blue circles). Furthermore, power-law fits for the anisotropic (thick solid orange) and isotropic emission (thick dash-dotted magenta) are shown. The errors include statistical and systematic uncertainties and are only shown for data and diffuse contributions for reasons of clarity.

the absolute fractional residual to be

$$\frac{1}{N} \sum_n \frac{|d_n - \lambda_n|}{\lambda_n} \approx \frac{1}{N} \sum_n \frac{|\mathcal{G}(0, 1)|}{\sqrt{\lambda_n}} \approx \frac{1}{N} \sum_n \sqrt{\frac{2}{\pi d_n}}.$$

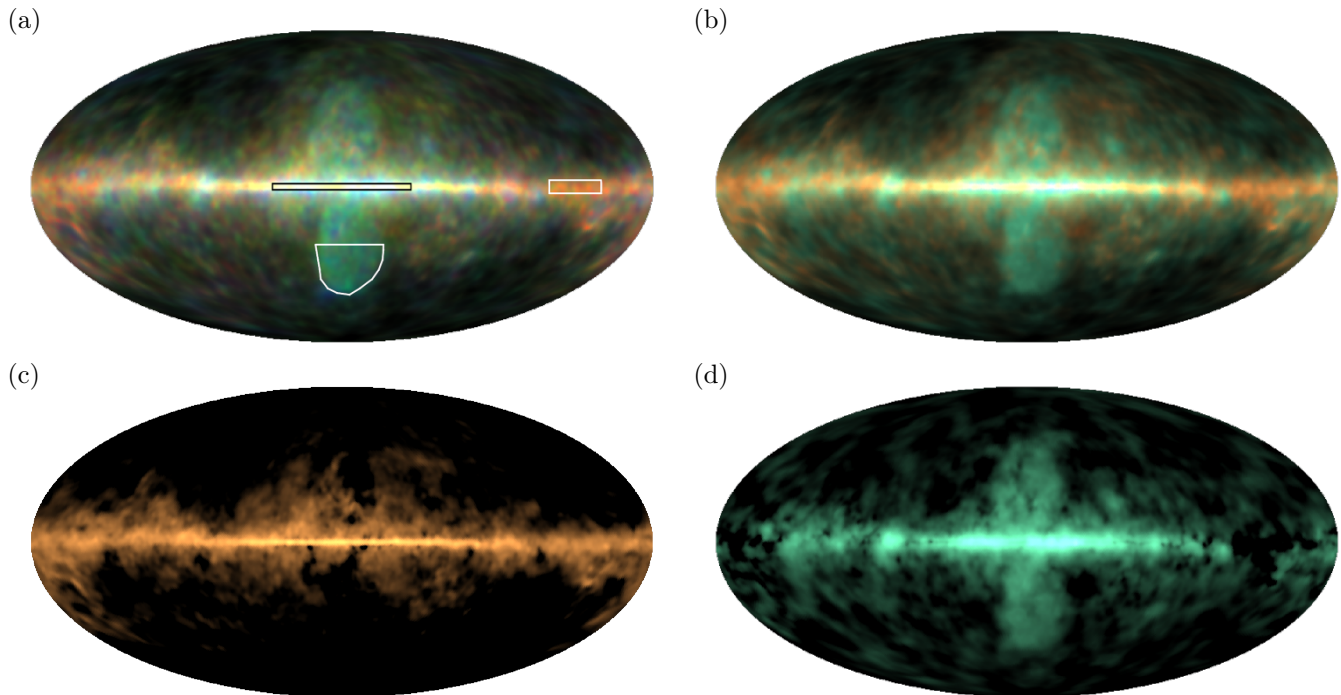


**Fig. 6.** Illustration of the spectral indices of featureless power-law-fits,  $\phi_{\text{aniso}} \propto E^{-\gamma}$ , at all positions in the sky using energy bands 1–8.

tifact due to imperfections of spherical harmonic transformations applied during the inference. Previous comparisons with best fitting templates created by the GALPROP code (Moskalenko & Strong 2000; Strong et al. 2000; Ackermann et al. 2008, 2012d, and references therein) often show significant residuals indicating features lacked by the respective models; e.g., cf. Fig. 6 in Ackermann et al. (2012d). Since our inference machinery, on the contrary, is free of *a priori* assumption regarding the existence of any Galactic or extragalactic features, significant residuals are not to be expected.

Excluding the point-like contribution to the reconvolved count map, the diffuse  $\gamma$ -ray sky becomes fully revealed, see Fig. 1c. The diffuse count map clearly displays Galactic features and substructures within the ISM. While the reconvolved photon count image appears somewhat smoothed, its deconvolved counterpart displays the Milky Way in more detail. The diffuse  $\gamma$ -ray fluxes in the individual energy bands are shown in Fig. 2. The coarseness of the images

For the considered data set, this computes to around 10%.



**Fig. 7.** Illustration of the  $\gamma$ -ray sky in pseudocolor in Mollweide projection. Panel (a) reproduces Fig. 4d and highlights the contours defining the “bulge”-, “cloud”-, and “bubble”-like region. Panel (b) shows the linear fit of the latter two to the total diffuse flux. The Panels (c) and (d) show the “cloud”- and “bubble”-like diffuse components.

increases with energy because the number of detected photons, and thus the signal-to-noise ratio, drops drastically. The uncertainties of the reconstructions are illustrated in Fig. 3. Nevertheless, the Galactic disk and bulge are clearly visible at all energies.

### 3.1.1. Pseudocolor Images

In order to obtain a better view on the spectral characteristics of the  $\gamma$ -ray sky, we combine the maps at different energies by a pseudocolor scheme. This scheme is designed to mimic the human perception of optical light in the  $\gamma$ -ray range. Intensity indicates the (logarithmic) brightness of the flux, and red colors correspond to low energy  $\gamma$ -rays around 1 GeV and blue colors to  $\gamma$ -rays up to 300 GeV. The resulting pseudocolor maps of the  $\gamma$ -ray sky are presented in Fig. 4. Thanks to a suitably tuned color response, spectrally different regions can easily be identified by the human eye. At a first glance, we can recognize the bright bulge of the Milky Way, the Fermi bubbles as two greenish blue, roundish areas, and red to yellowish cloud-like structures at low and intermediate latitudes, in particular around the Galactic anticenter.

The upper panels (a–d) illustrate the functionality of the D<sup>3</sup>PO inference algorithm showing the raw data and the denoised, deconvolved, and decomposed reconstruction, respectively. The denoising applies most strongly to the high energy bands, appearing green- to blueish, where the signal-to-noise ratios are worst. The deconvolution effect is most evident for point-like contributions in lower energy bands, appearing reddish, because of the increasing width of the point spread function (PSF) for these bands. Finally, the decomposition reveals the purely diffuse  $\gamma$ -ray sky.

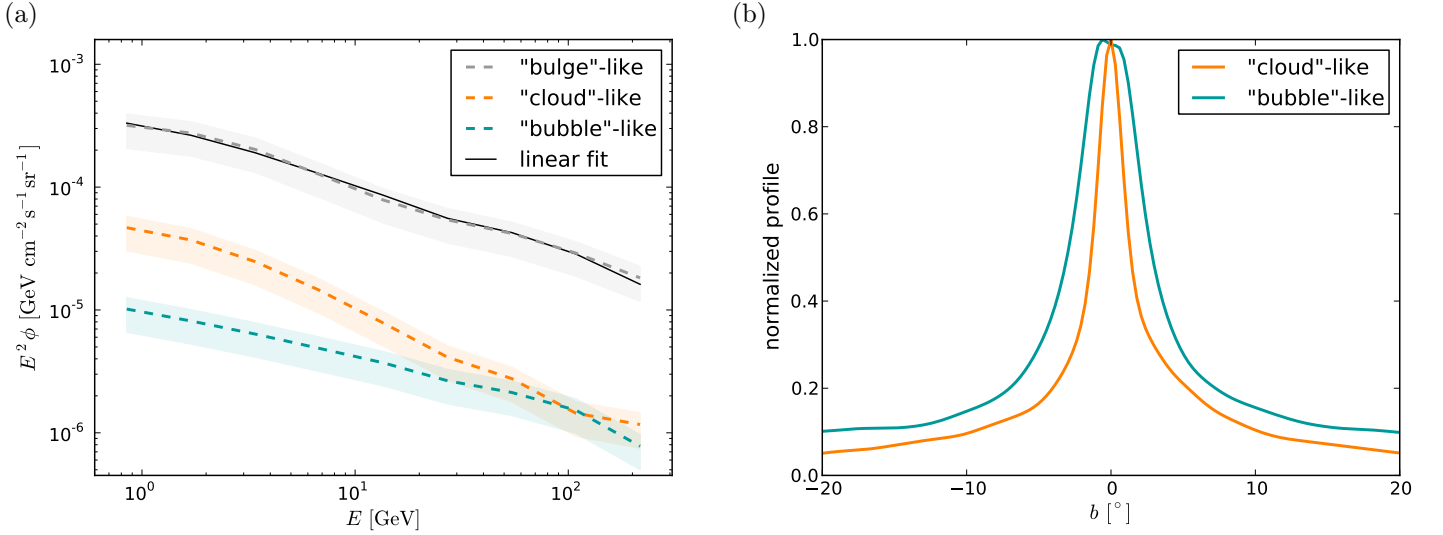
This view reveals many interesting features beyond the Galactic disk and bulge, which we will discuss in the following.

### 3.1.2. Bubbles, Features, and Radio

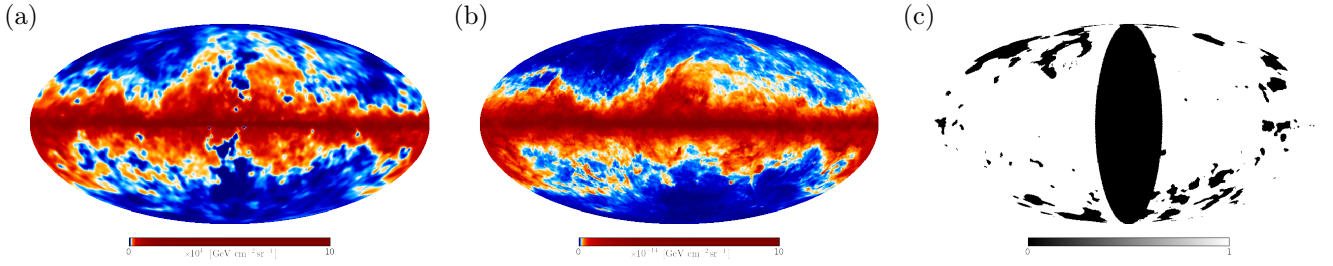
The most striking features recovered by our reconstruction are the *Giant Fermi Bubbles* first found by Su et al. (2010). The bubbles extend up to  $|b| \lesssim 50^\circ$  in latitude and  $|l| \lesssim 20^\circ$  in longitude. They appear to emerge from the Galactic center, however, their astrophysical origin is still under discussion (Su et al. 2010; Cheng et al. 2011; Dogiel et al. 2011; Su & Finkbeiner 2012; Yang et al. 2014; Ackermann et al. 2014b, and references therein). In agreement with previous studies, we find the bubbles to have relatively sharp edges and an overall homogeneous surface brightness, appearing greenish blue in Fig. 4. Yang et al. (2014) report an energy dependent morphology of the southern bubble, which is, in particular, more extended to the Galactic south and west at high energies. Our results confirm this extension, as can be seen in the reconstruction for the highest energy band in Fig. 2.

Figure 4 also shows the *North Arc*, *Donut* and *Cocoon* (Su et al. 2010; Su & Finkbeiner 2012). However, we do not find evidence for a jet-like structure as reported by Su & Finkbeiner (2012).

Moreover, there is a correlation with structures seen at radio frequencies. For example, a comparison with the synchrotron map from Haslam et al. (1982) taken at 408 MHz reveals  $\gamma$ -ray counterparts of the *Radio Loop I* (Large et al. 1962) and smaller objects like the *Large Magellanic Cloud* at  $(l, b) \approx (-80^\circ, -30^\circ)$ , as well as the  $\gamma$ -ray glow around *Centaurus A* at  $(l, b) \approx (-50^\circ, 20^\circ)$ . However, the resolution of the all-sky reconstruction is too coarse to detail the



**Fig. 8.** Illustration of “cloud”-, and “bubble”-like component. Panel (a) shows energy spectra from ROIs defined in Fig. 7a, cf. text. In addition to the spectra retrieved from the different regions, a linear combination of the “cloud”-, and “bubble”-like is fit to the “bulge”-like component, cf. legend. Panel (b) shows the normalized latitude profiles of the “cloud”-, and “bubble”-like component.



**Fig. 9.** Illustration of the brightness in Mollweide view. Panel (a) shows the integrated brightness of the “cloud”-like component. Panel (b) shows the monochromatic brightness of thermal dust emission at 353 GHz (Planck Collaboration 2013a). Panel (c) shows in white the area included in computing the latitude profile in Fig. 10.

morphology of such small sources. A reconstruction of a more focused field of view would be necessary to that end.

### 3.2. Energy Spectra & Spectral Indices

In order to get a more quantitative view on the different contributions to the  $\gamma$ -ray flux, we now investigate photon flux energy spectra.

Figure 5 shows the measured<sup>2</sup> and reconstructed energy spectra in four different regions of interest (ROI) specified in Tab. 2. The ROIs are typical areas in- or excluding the Galactic center or bulge. The errors are dominated by systematics; i.e., by the uncertainty in the absolute energy scale  $\Delta\mathcal{E}/\mathcal{E} = (+2\%, -5\%)$  (Ackermann et al. 2012c) and in the normalization of the effective area, which is  $\pm 10\%$  up to 100 GeV and increases linearly with  $\log(E)$  to  $\pm 15\%$

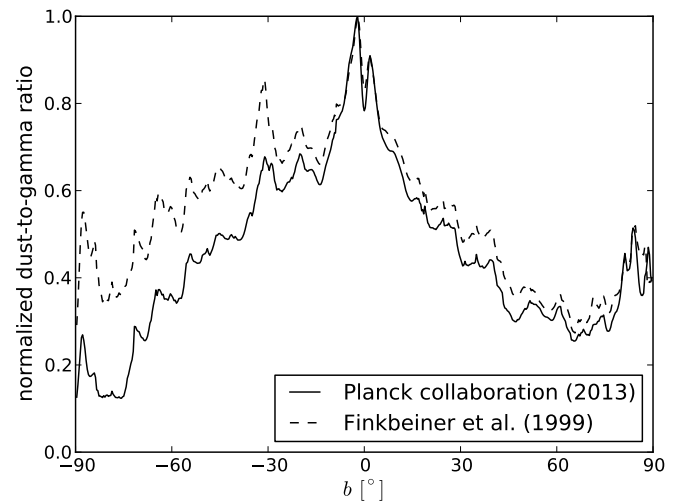
<sup>2</sup> The photon data  $\mathbf{d}$  can be converted into flux units by division by the respective exposure  $\varepsilon$ , solid angle  $\Omega$ , and width of the energy band, according to

$$\phi_j = \phi(E_j^{\text{mid}}) \equiv \frac{1}{(E_j^{\text{max}} - E_j^{\text{min}})} \sum_{i \in \text{ROI}} \frac{1}{2\Omega_{\text{ROI}}} \left( \frac{d_{ij}^{\text{FRONT}}}{\varepsilon_{ij}^{\text{FRONT}}} + \frac{d_{ij}^{\text{BACK}}}{\varepsilon_{ij}^{\text{BACK}}} \right),$$

where the indices  $i$  and  $j$  label pixels and energy bands, respectively. Notice that front and back converted data are averaged accordingly.

at 1 TeV (Bregeon et al. 2013)<sup>3</sup>. The statistical uncertain-

<sup>3</sup> See also [http://fermi.gsfc.nasa.gov/ssc/data/analysis/LAT\\_caveats.html](http://fermi.gsfc.nasa.gov/ssc/data/analysis/LAT_caveats.html).



**Fig. 10.** Illustration of the latitude profile of the dust-to-“cloud”-like-gamma ratio. Thermal dust emission from Planck Collaboration (2013a); Finkbeiner et al. (1999) has been smoothed with a  $0.7^\circ$  Gaussian kernel to match the coarseness of the  $\gamma$ -ray map.



**Table 2.** Overview of the regions of interest. Listed are inclusion cuts in Galactic longitude  $l$  and latitude  $b$ , covered solid angle  $\Omega$ , fitted spectral indices  $\gamma^{(s)}$ , and  $\chi^2$  divided by the degrees of freedom (DOF); i.e., 9 bands - 2 unknowns = 7. The latter two are given for the anisotropic and the isotropic diffuse photon flux, respectively.

ROI	inclusion cuts	$\Omega$ [sr]	$\gamma^{(s)}$	$\chi^2/\text{DOF}$	$\gamma_{\text{iso}}^{(s)}$	$\chi_{\text{iso}}^2/\text{DOF}$
1	all-sky	$4\pi$	$2.52 \pm 0.05$	0.10	$2.59 \pm 0.05$	0.15
2	$ b  > 10^\circ \vee  l  < 10^\circ$	10.5	$2.50 \pm 0.05$	0.12	$2.59 \pm 0.05$	0.15
3	$ b  > 10^\circ$	10.4	$2.50 \pm 0.05$	0.14	$2.59 \pm 0.05$	0.15
4	$ b  < 10^\circ \wedge  l  < 80^\circ$	4.5	$2.51 \pm 0.05$	0.13	$2.56 \pm 0.05$	0.15

ties determined from the inference are shown in Fig. 3, and tend to track the signal-to-noise ratio.

We split the total energy spectrum into a diffuse and a point-like contribution, whereby we additionally distinguish between isotropic<sup>4</sup> and anisotropic diffuse components. Overall, the spectra from the reconstructed fluxes agree well with the data, except for the highest energy bin, where the point-like component seems to be strongly overestimated. There are two reasons for this. On the one hand, the signal-to-noise ratio is lowest, and on the other hand, the PSF is sharpest. Therefore, the distinction between point-like sources, noise peaks, and weak diffuse emission breaks down.

The diffuse  $\gamma$ -ray flux amounts to  $\sim 90\%$  of the total flux with the majority being anisotropic contributions of Galactic origin. Both diffuse contributions, isotropic and anisotropic, are consistent with featureless power-laws,  $\phi \propto E^{-\gamma}$ . The results of the power-law fits are given in Tab. 2.

For the anisotropic component we find a spectral index  $\gamma^{(s)} = 2.50 \pm 0.05$ , which is in agreement with the index of  $2.44 \pm 0.01$  reported by Ackermann et al. (2012b). In low energy bands, the spectrum is dominated by the production and decay of  $\pi^0$ -mesons induced by CR protons, while IC emission becomes increasingly important at the highest energies (Ackermann et al. 2012b,d). The declining tail of the pion bump, peaking at  $\frac{1}{2}m_{\pi^0} \approx 0.07 \text{ GeV c}^{-2}$ , is visible.

The isotropic background is often referred to as “extragalactic” because it comprises unresolved extragalactic sources and might include possible signatures from large-scale structure formation or dark matter decay (Dermer 2007; Abdo et al. 2010b, and references therein). The isotropic diffuse background also follows a featureless power-law with a spectral index  $\gamma_{\text{iso}}^{(s)} = 2.59 \pm 0.05$ . Notice that the excess of isotropic emission around  $\sim 14 \text{ GeV}$  is rather insignificant with regard to the uncertainties.<sup>5</sup> Abdo et al. (2010b) derive a spectral index of  $2.41 \pm 0.05$  from 1 year Fermi LAT data in the energy range of 0.03–100 GeV. This indicates a slight spectral softening of the isotropic background towards higher energies. In the same energy range, observations with the Energetic Gamma Ray Experiment Telescope (EGRET) yield a spectral index of  $2.10 \pm 0.03$  that is considerably smaller (Sreekumar et al. 1998). This discrepancy, which might be an instrumental issue, is not yet clarified.

The recent analysis by Ackermann et al. (2014a) investigating an energy range of 0.1–820 GeV reports the isotropic  $\gamma$ -ray background to be consistent with a power-law with

exponential cut-off at 280 GeV having a spectral index of  $2.32 \pm 0.02$ .

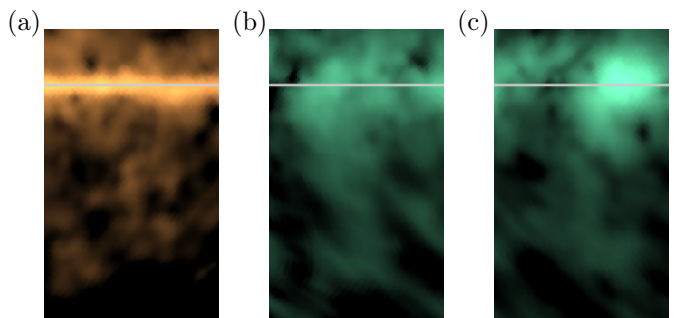
If we consider smaller ROIs, we find fluctuations in the spectral index of the diffuse  $\gamma$ -ray flux. These fluctuations could give some indication about the CR spectrum, the composition of the local ISM, etc.

Since the D<sup>3</sup>PO algorithm provides a continuous estimate of the diffuse photon flux, we can perform a spectral analysis in individual pixels. Although the energy spectra vary with location, we, for simplicity, assume a general power-law behavior everywhere, but with varying spectral index. Figure 6 shows the obtained spectral index map for the anisotropic  $\gamma$ -ray sky, centered on the average index of 2.5. The spatial smoothness of the spectral index map reflects that there are no discontinuities between neighboring pixels in the reconstructions.

From this spectral index map it is apparent that the Galactic disk is spectrally softer compared to the all-sky average. The same holds for the extensive structures that trace interstellar gas. These regions are dominated by hadronic interactions releasing  $\gamma$ -ray photons; e.g.  $\pi^0$  production and decay (cf. e.g., Ackermann et al. 2012d).

In the region overlapping with the *Giant Fermi Bubbles* we find overall similar spectra that are, however, harder in contrast to the all-sky average. This is in agreement with the results of Ackermann et al. (2014b), although they found a log-parabola to fit best. The strong hardening towards the high latitude edge of the southern bubble comes from its increased spatial extent compared to lower energies, cf. Yang et al. (2014). Further local spots inside the bubble region appear insignificant within the statistical and systematic uncertainties.

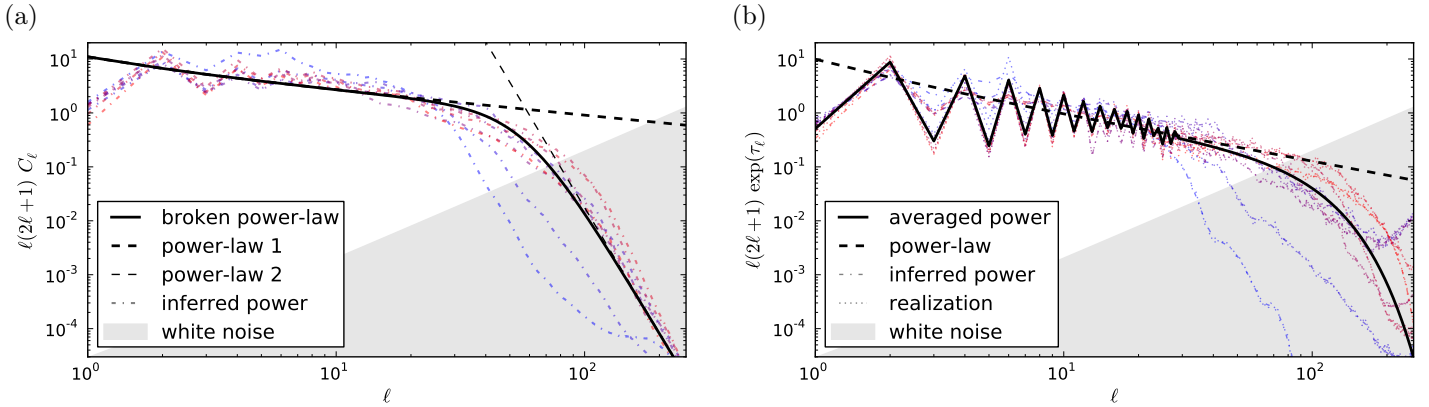
Although the morphology and spectra of the bubbles can be explained with hadronic and leptonic CR processes, IC scenarios give the preference of also reproducing the microwave haze observed with WMAP and Planck (Planck



**Fig. 11.** Panel (a) shows a magnification of the *Chamaeleon* complex from Fig. 7c. Panel (b) and (c) show magnifications of tentative outflows from Fig. 7d. The light gray line marks the Galactic plane ( $l = 0^\circ$ ).

<sup>4</sup> In this context, “isotropic” means spatially constant.

<sup>5</sup> Such a tentative excess could be a line-like signal from dark matter decay/annihilation (Conrad 2012), however, this is highly speculative considering the available data.



**Fig. 12.** Illustration of angular power spectra over angular quantum number  $\ell$ . Panel (a) shows the spectra of the diffuse photon flux  $\phi^{(s)}$  in each energy band and power-law fits thereof, cf. legend. Panel (b) shows the direct realization spectra of the diffuse signal, as well as the inferred, fitted and averaged spectra, cf. legend. The colors (from red over violet to blue) indicate energy (from band 1 to 9) in both panels, and a white noise spectrum with arbitrary normalization is included for comparison.

Collaboration 2013b; Yang et al. 2013; Ackermann et al. 2014b). Furthermore, the low target densities at higher Galactic latitudes render the hadronic scenario as not very compelling.

### 3.3. Diffuse Emission Components

The pseudocolor scheme introduced in Sec. 3.1.1 already allows us to visually inspect the continuous reconstruction of the diffuse  $\gamma$ -ray sky. By eye, we can make out the Galactic bulge, the Fermi bubbles, and also cloudy structures around the Galactic anticenter.

In order to confirm this impression the visualization gives, we retrieve energy spectra from three characteristic regions: “bulge”-like ( $|l| < 40^\circ$ ,  $|b| < 1.5^\circ$ ), “cloud”-like ( $-150^\circ < l < -120^\circ$ ,  $|b| < 3^\circ$ ), and “bubble”-like (for which we select the southern bubble up to latitudes  $b < -27.5^\circ$ ). The contours of those regions are shown in Fig. 7a.

Figure 8a shows the energy spectra retrieved from the three regions. The “cloud”-like spectrum is rather soft ( $\gamma^{(s)} \approx 2.6$ ) and features the tail of the pion bump. It is not surprising that the “cloud”-like spectrum is dominated by emission from  $\pi^0$  decay, because the cloudy structures trace the gas content of the ISM that provides the target protons for  $\pi^0$  production. The “bubble”-like spectrum is significantly harder ( $\gamma^{(s)} \approx 2.4$ ) indicating the dominance of hard processes like IC emission. The “bulge”-like region exhibits a spectrum that, besides having a higher absolute scale, can be described as a linear combination of the former two spectra, cf. Fig. 8a.

As the “bulge”-like spectrum is found to be a linear combination of “cloud”- and “bubble”-like, we can try to decompose the whole diffuse sky into those two components. For this purpose, we fit the spectrum in individual pixels by the “cloud”-, and “bubble”-like component.<sup>6</sup> The fit coefficients then indicate the strength of the “cloud”- or “bubble”-like contribution at all locations. Multiplying the fit coefficients with the respective spectra, we obtain a pseudocolor visualization of the “cloud”- or “bubble”-like emission components as shown in Fig. 7.

<sup>6</sup> In case the fit suggests a negative coefficient for one component, the fitting procedure is repeated ignoring this component. In this way, we ensure the positivity of the components.

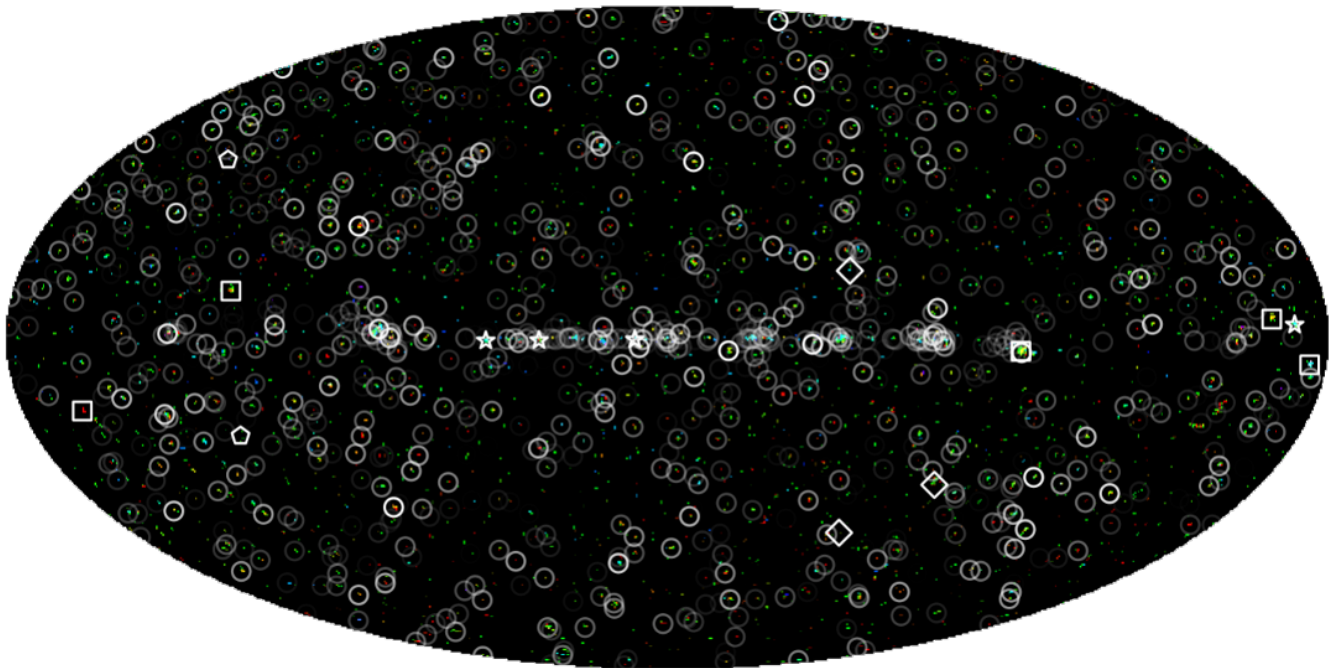
In spite of the simplicity of this two component model, we find a good agreement between the total diffuse emission and the sum of the two components. The relative residuals are around 5–19%, except for the highest energy band that was excluded from the fitting procedure, where the error is approximately 35%. Our findings demonstrate that the  $\gamma$ -ray sky in the energy range from 0.6 to 307.2 GeV can with high precision be described by “cloud”- and “bubble”-like emission components only.

From the shape of the energy spectrum of the “cloud”-like component, we deduced that it is dominated by hadronic processes. We can also compare its morphology with other ISM tracers. For this, we compute the brightness of the “cloud”-like component and show it in Fig. 9a. The resulting map agrees with the thermal dust emission seen by Planck (Planck Collaboration 2013a) at 353 GHz shown in Fig. 9b. We like to stress how similar the morphology of thermal dust microwave/IR emission and the “cloud”-like  $\gamma$ -ray component are. In particular in the cloudy region in the Galactic east, the structures agree well, although we took the spectrum from a region in the west. As the thermal dust emission traces the ISM, and hence the target gas for the CR protons, we are confident that the “cloud”-like component is indeed dominated by hadronic emission processes.

The *Chamaeleon* complex, around  $(l, b) \sim (-60^\circ, -20^\circ)$ , hosting a number of star forming clouds is visible in the “cloud”-like component, cf. Fig. 11a. Recent work by the Planck Collaboration (2014) used  $\gamma$ -, radio- and dust data to map the local gas content of the clouds.

The “cloud”-like component is, however, morphologically not exactly identical to the dust emission. For example, in the latitude profile shown in Fig. 10, the dust-to-gamma ratio decreases with increasing latitude. This profile was computed including only pixels outside the bubble region ( $|l| > 30^\circ$ ), where both, the “cloud”- and “bubble”-like component, contribute, and the estimated Planck dust emission is positive. The dust seems to be preferentially in the Galactic disk compared to the thermal gas traced by  $\gamma$ -rays.

The morphology of the “bubble”-like component is very different, cf. Fig. 7. Since the spectrum of the Fermi bubbles is spatially relatively constant, the shape of the northern bubble is well recovered based on the spectrum of the southern one. We also find an excess in the “bubble”-like



**Fig. 13.** Illustration of the point sources in the  $\gamma$ -ray sky in pseudocolor and in Mollweide projection. Markers show point sources from the second Fermi LAT source catalog (Nolan et al. 2012) for comparison, whereby the gray scale indicates their average detection significance as listed in the catalog. Special markers show a selection of pulsars (squares), local SNRs (stars), and well-known galaxies (pentagons), as well as famous extragalactic objects (diamonds), cf. text.

emission in the bulge region, as well as in the star forming region *Cygnus-X* around  $(l, b) \sim (80^\circ, 0^\circ)$ . Excess of emission following the “bubble”-like spectrum is also visible at intermediate latitudes exhibiting mushroom-like shapes typical for hot outflows; e.g., south of the *Cygnus-X* region  $((l, b) \sim (90^\circ, < -15^\circ))$ , or along  $(l, b) \sim (130^\circ, < -15^\circ)$ , cf. Fig. 11c and d. Those are likely candidates for outflows from active star forming regions of the Milky Way. Furthermore, the latitude profile shown in Fig. 8b indicates that the “bubble”-like disk is roughly twice as thick as the “cloud”-like component.

Since the “bubble”-like  $\gamma$ -ray emission is morphologically so distinct, and sets itself apart from the “cloud”-like component, we suppose that the two components are dominated by different emission processes. The “bubble”-like spectrum is distinctly harder and less structured, therefore a leptonic emission process, in particular IC scattering, seems more convincing in causing the “bubble”-like diffuse component.

The CR populations producing these two  $\gamma$ -ray emission components need not to be very different. It might be that we are just seeing two different phases of the ISM:

- a cold and condensed one that carries most of the Galactic dust and has a sufficient nuclei target density to be predominately revealed through hadronic interactions with CR protons. Hence, the resulting  $\gamma$ -ray emission mostly traces the highly structured gas distribution.
- a hot, dilute, and voluminous one that tends to flow out of the Galactic disc. The  $\gamma$ -ray emission from within is dominated by IC upscattering of the Galactic photon field by CR electrons. As the photon field is relatively homogeneous, the morphology of the “bubble”-like component is probably shaped by the spatial distribution of the CRs.

This simple two component model of the diffuse  $\gamma$ -ray emission supports scenarios in which the Fermi bubbles are just outflows of the hot ISM (Yang et al. 2013; Cheng et al. 2011; Dogiel et al. 2011; Chernyshov 2011; Carretti et al. 2013).

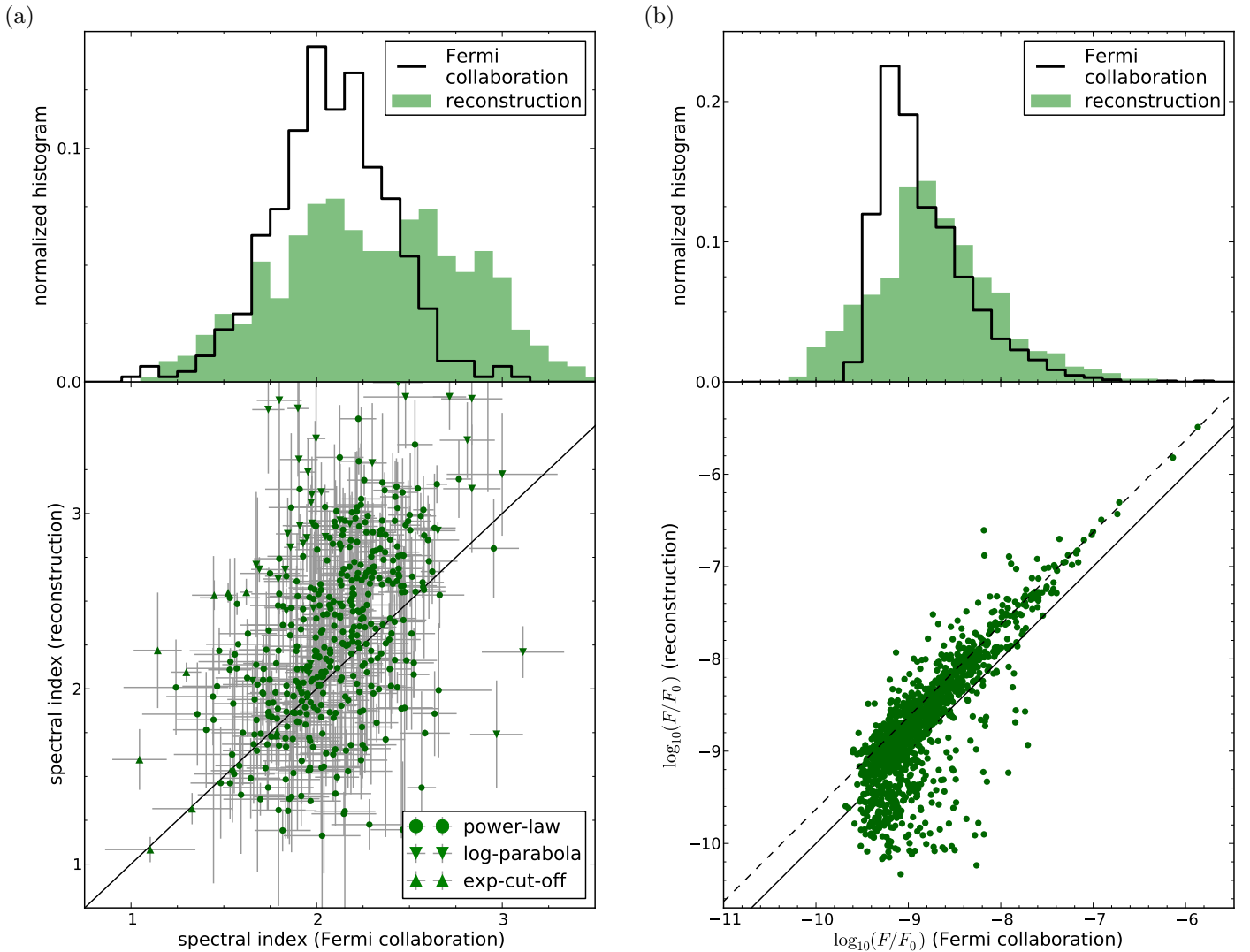
### 3.4. Angular Power Spectra

Under the assumption of statistical isotropy and homogeneity the second moments of a diffuse signal field are defined by its angular power spectrum. Studying power spectra gives some indication of the strength of typical fluctuations on respective angular scales described by the angular quantum number  $\ell$ . According to our chosen HEALPIX discretization, we examine spectra up to a maximum scale set by  $\ell_{\max} = 2 n_{\text{side}} = 256$ .

Figure 12 shows the angular power spectra of the diffuse photon flux  $\phi^{(s)}$  – the quantity we are interested in – and its logarithm, the diffuse signal field  $s$ . The power spectrum, which is *a priori* unknown, needs to be reconstructed from the data alongside the diffuse signal field (Wandelt et al. 2004; Jasche et al. 2010; Enßlin & Frommert 2011; Oppermann et al. 2012; Jasche & Wandelt 2013). This is done for each energy band separately. Further details on the inference procedure can be found in App. A.

The inferred power spectra of  $s$  show similar power-law behavior at all energies with some remarkable deviations. On large scales,  $0 < \ell \lesssim 28$ , the spectra exhibit a strong distinction between even and odd  $\ell$ -modes. The reason for this is the dominant contribution of the Galactic disk centered around  $b = 0^\circ$  to the diffuse photon flux, which excites/suppresses even/odd  $\ell$ -modes in the reconstruction.





**Fig. 14.** Comparison of the the second Fermi LAT source catalog (Nolan et al. 2012) and candidates from the reconstruction. Panel (a) shows the histogram and scatter plot of the spectral indices  $\gamma^{(u)}$  of candidates versus catalog sources. In the latter, a 1 : 1 line (black solid) is plotted for comparison, and the markers indicate the fit spectral shape, cf. legend. Panel (b) shows the histogram and scatter plot of the logarithmic total fluxes  $\log_{10}(F/F_0)$ , where  $F_0 = 1 \text{ cm}^{-2} \text{ s}^{-1}$ . The scatter plot hosts an 1 : 1 line (black solid) and 1 : 2.3 line (black dashed) for comparison.

On smaller scales, on the other hand, the power spectra start to fall off because small-scale features cannot be resolved due to the finite exposure of the Fermi LAT. This effect has a clear energy dependence. Since events with higher energies are more rare, the decline of spectra from high energy bands begins at lower  $\ell$ . Notice that the threshold set by the PSF is on very small scales; e.g., the 68% angular containment radius above 10 GeV is smaller than  $0.2^\circ$  corresponding to  $\ell \gtrsim 900$ .

Let us now consider the actual angular power spectrum  $C_\ell$  of the diffuse photon flux  $\phi^{(s)} \propto \exp(s)$ . This can be computed by transforming<sup>7</sup> the inferred (final) power spectra of  $s$  according to Greiner & Enßlin (2013). This transformation shifts power between different  $\ell$ -modes, in particular towards smaller scales (larger  $\ell$ ). Again, we find a

power-law behavior of the angular power spectrum, as can be seen in Fig. 12a. We fit a broken power-law with indices  $\gamma_{\ell 1}^{(s)} = 2.45 \pm 0.01$  and  $\gamma_{\ell 2}^{(s)} = 9.73 \pm 0.16$ . The break point, though, is subject to the selected energy bands, and should shift to higher  $\ell$  with increasing observation time.

### 3.5. Point Sources

Another result of our analysis of the 5.5 year Fermi data is a reconstruction of the point-like contribution to the photon flux,  $\phi^{(u)}$ , which consists of Galactic and extragalactic point sources.

Figure 13 shows an all-sky map of all point source candidates in the pseudocolor scheme introduced in Sec. 3.1.1. Markers (and their opacity) in the map indicate the position (and detection significance) of point sources from the sec-

<sup>7</sup> Here, we disregard the respective monopole (mode with  $\ell = 0$ ) for convenience. As a consequence, the absolute scale of the power spectrum of the diffuse  $\gamma$ -ray flux  $\phi^{(s)}$  becomes ambiguous.

ond Fermi LAT source catalog (Nolan et al. 2012).<sup>8</sup> There is a diversity of sources, which is why we highlight a selection by special markers. The brightest  $\gamma$ -ray sources are pulsars (PSRs) like *Vela* (PSR J0835-4510), *Geminga* (PSR J0633+1746), and *Crab* (PSR J0534+2200), but there are also pulsars that have first been detected in  $\gamma$ -ray; e.g., LAT PSR J0007+7303 and LAT PSR J0357+3205. The Galactic disk, and especially the bulge, is clustered with point sources including, among others, supernova remnants (SNRs) like W51C, W44, W30, and IC443. There are also many homogeneously distributed extragalactic sources, for example, the starburst galaxy *Cigar* (M82) or our neighboring galaxy *Andromeda* (M31). Furthermore, the core of *Centaurus A* (NGC 5128) and the *Small* and *Large Magellanic Cloud* are visible in  $\gamma$ -rays.

Deriving a catalog of source candidates from the point-like flux is difficult because a point source might, for example, appear in neighboring pixels at different energies due to different noise realizations and the aforementioned energy dependence of the signal-to-noise ratio and the PSF. In order to nominate a candidate, we check if the point-like contribution exceeds  $5\sigma$  above the diffuse emission in at least two of the energy bands 1–8, which is a simple but conservative criterion taking the diffuse reconstruction uncertainty  $\sigma$  into account, cf. Fig. 3. Notice that we exclude the highest energy band from our search, since the point-like flux in this band seems to be contaminated as discussed in Sec. 3.2. We refer to the compiled point source catalog as preliminary D<sup>3</sup>PO Fermi (pDF) catalog.

Qualitatively, the point-like flux found by D<sup>3</sup>PO agrees with the second Fermi LAT source catalog as shown in Fig. 13. A few sources appear slightly off-center or smeared out over two or more pixels. The reason for this is that such sources are positioned in-between grid points of the chosen HEALPIX grid. Notice that image pixels in Fig. 13 do not represent HEALPIX pixels.

We find 2,522 source candidates, cf. Tab. 3. For comparison, the 1 and 2 year Fermi LAT source catalog comprises 1,451 and 1,873 sources, respectively (Abdo et al. 2010a; Nolan et al. 2012). 1,269 of our sources can be associated with known LAT sources as the angular distance between pDF candidate and catalog source is less than the angular resolution of our reconstruction. The reason why we do not confirm all objects in the second Fermi LAT source catalog is the conservative criterion we apply. This still leaves 1,253 new source candidates to be confirmed by future work.

We caution that a more detailed study is necessary to confirm or reject those candidates. The analysis of the individual sources, best done on more constrained ROIs and with higher angular resolution, is left for future work.

In the following, we compare the pDF candidates for which we find an unique association within the second Fermi LAT source catalog (Nolan et al. 2012) by means of their spectral index and total flux. Notice that both studies are based on different data, exposure, calibration, and analysis algorithms.<sup>9</sup>

<sup>8</sup> For further details regarding the Fermi LAT source catalog see [http://fermi.gsfc.nasa.gov/ssc/data/access/lat/2yr\\_catalog/](http://fermi.gsfc.nasa.gov/ssc/data/access/lat/2yr_catalog/).

<sup>9</sup> The main differences are the selection of SOURCE (CLEAN) events, the 2 (5.5) years of observation, and the usage of the P7\_V6 (P7REP\_V15) IRFs in the second Fermi LAT source catalog (Nolan et al. 2012) (the candidate catalog presented here).

The spectral index of a sources' energy spectra should not (or at least not strongly) be influenced by those differences. For each source, we attempt to fit three different spectral shapes: a plain power-law,

$$\phi^{(u)}(E) = K \left( \frac{E}{E_0} \right)^{-\gamma^{(u)}}, \quad (2)$$

a log-parabola,

$$\phi^{(u)}(E) = K \left( \frac{E}{E_0} \right)^{-\gamma^{(u)} - \beta \log(E/E_0)}, \quad (3)$$

and a power-law with exponential cut-off,

$$\phi^{(u)}(E) = K \left( \frac{E}{E_0} \right)^{-\gamma^{(u)}} \exp \left( -\frac{E - E_0}{E_{\text{cut}}} \right). \quad (4)$$

Here  $E_0 = 1$  GeV serves as a reference energy, and the spectral index  $\gamma^{(u)}$  is a fit parameter as are  $K$ ,  $\beta$ , and  $E_{\text{cut}}$ . The preliminary source catalog contains the best fit parameters for all shapes if applicable.

Figure 14a shows the comparison of the pDF spectral indices and the ones listed in the second Fermi LAT source catalog (corrected to  $E_0$  if need be). The scatter of spectral indices is large, but comparable to the uncertainties. We find a rough agreement, although our distribution is broadened towards higher indices. Most of the outliers yielding a high (low) spectral index are modeled by a log-parabola (exponential cut-off) that has an additional degree of freedom compared to the plain power-law. This implies that the versatility of point source spectra might not be covered by the considered spectral shapes.

Figure 14b shows a comparison of the total fluxes  $F^{(u)}$ , defined as

$$F^{(u)} = \int d\Omega \sum_{j=1}^8 \int_{\tilde{E}_j^{\min}}^{\tilde{E}_j^{\max}} dE \left( \frac{E}{E_j^{\text{mid}}} \right)^{-\gamma^{(u)}} \phi^{(u)}(E_j^{\text{mid}}) \quad (5)$$

with  $j$  labeling the energy bands and

$$\begin{aligned} \tilde{E}_j^{\max} &= \min\{1 \text{ GeV}, E_j^{\min}\} \\ \tilde{E}_j^{\min} &= \max\{E_j^{\max}, 100 \text{ GeV}\}, \end{aligned}$$

in a histogram and a scatter plot. The differences in the event selection, exposure, and calibration seem to amount to an off-set in the total flux of an factor  $\sim 2.3$ . Taking this factor into account, the fluxes show a good agreement. At the faint end, our fluxes tend to come below the fluxes reported in the second Fermi LAT source catalog (Nolan et al. 2012). Since our analysis benefits from a higher exposure and improved calibration, the fluxes from the Fermi collaboration might rather be considered as upper limits in this comparison.

### 3.5.1. Galaxy Cluster

Some galaxy clusters exhibit diffuse, extended radio emission, so-called radio halos, which proves the existence of relativistic electrons therein. If relativistic protons are present as well,  $\gamma$ -ray emission is to be expected due to hadronic interactions (Ackermann et al. 2010, and references therein).

**Table 3.** Extract from the pDF catalog. Listed are candidate’s ID (derived from the HEALPIX index), position in Galactic longitude  $l$  and latitude  $b$ , total flux between 1–100 GeV, contributing energy bands, and distance to the associated source in the second Fermi LAT source catalog (Nolan et al. 2012). The full catalog including uncertainties is available online at <http://www.mpa-garching.mpg.de/ift/fermi/> as a FITS table.

candidate ID	$l[^\circ]$	$b[^\circ]$	$F^{(u)}[\text{cm}^{-2}\text{s}^{-1}]$	contributing energy bands	dist. [ $^\circ$ ]	primary association	...
pDF091157	−164.88	4.27	$2.8 \times 10^{-6}$	✓✓✓✓✓✓✓✓	0.01	2FGL J0633.9+1746	...
pDF009247	179.79	64.92	$1.4 \times 10^{-7}$	✓✓✓✓✓✓✓✓	0.11	2FGL J1104.4+3812	
pDF103031	−96.40	−2.76	$6.0 \times 10^{-6}$	✓✓✓✓✓✓✓✓	0.05	2FGL J0835.3−4510	
pDF108550	−175.42	−5.79	$7.4 \times 10^{-7}$	✓✓✓✓✓✓✓✓	0.03	2FGL J0534.5+2201	
pDF036698	63.60	38.89	$3.5 \times 10^{-8}$	✓✓✓✓✓✓✓✓	0.04	2FGL J1653.9+3945	
pDF029553	21.85	44.08	$4.1 \times 10^{-8}$	✓✓✓✓✓✓✓✓	0.14	2FGL J1555.7+1111	
pDF176023	17.65	−52.32	$8.3 \times 10^{-8}$	✓✓✓✓✓✓✓✓	0.09	2FGL J2158.8−3013	
pDF161378	−111.41	−39.89	$3.5 \times 10^{-8}$	✓✓✓✓✓✓✓✓	0.04	2FGL J0449.4−4350	
pDF006863	29.44	68.27	$4.7 \times 10^{-8}$	✓✓✓✓✓✓✓✓	0.07	2FGL J1427.0+2347	
pDF158586	86.09	−38.18	$4.0 \times 10^{-7}$	✓✓✓✓✓✓✓✓	0.02	2FGL J2253.9+1609	
⋮							⋮

Feretti et al. (2012) provide a collection of cluster hosting radio halos. We investigate the presence of  $\gamma$ -ray emission in the direction of those clusters, which would in our reconstruction appear point-like due to the pixelization of our reconstruction. Tab. 4 lists our upper limits of the total flux  $F^{\text{up}}$  and the level of the diffuse emission  $F^{(s)}$  at the cluster locations. The upper limit flux is computed according to  $F^{\text{up}} = F^{(u)} + 2\sigma_{F^{(s)}}$ , where  $\sigma_{F^{(s)}}$  is the uncertainty of the total diffuse flux  $F^{(s)}$ .<sup>10</sup> This is the largest possible flux hidden under the diffuse  $\gamma$ -ray emission.

We find upper limit fluxes between  $10^{-10}\text{cm}^{-2}\text{s}^{-1}$  and  $10^{-8}\text{cm}^{-2}\text{s}^{-1}$  for the energy range 1–100 GeV. A few clusters contain or are in projection to known  $\gamma$ -ray point-sources (active galaxies), which affects the upper limits for those clusters. These are: A1758a, RXJ0107.7+5408, *Perseus* (NGC 1275 and IC310), A2029, A2390.

Ackermann et al. (2010) provide upper limits for nearby clusters above 0.1 GeV. Some clusters are in both samples, namely A2256, A2319, *Coma* (A1656), *Ophiuchus*, *Perseus* (A0426), A1914, A2029, A2142, A2163, A2744, *Bullet* (1E 0657-56), MACSJ0717.5+3745. We find comparable or slightly lower upper limit fluxes. For example, for the *Coma* (A1656) cluster Ackermann et al. (2010) report about  $10^{-8}\text{cm}^{-2}\text{s}^{-1}$  above 0.1 GeV. Assuming a spectral index of 2.5 this translates to  $3 \times 10^{-10}\text{cm}^{-2}\text{s}^{-1}$  above 1 GeV, which is slightly larger than the  $1.2 \times 10^{-10}\text{cm}^{-2}\text{s}^{-1}$  we obtain.

However, we caution that our upper limits are not strict 95% confidence intervals, as they are not a direct outcome of our inference, but estimated as described above. A closer investigation is left for future work.

## 4. Conclusions & Summary

We analyze the Fermi LAT 5.5 year photon data in the energy range from 0.6 to 307.2 GeV. Applying the D<sup>3</sup>PO inference algorithm, the data is effectively denoised, deconvolved, and decomposed with Bayesian inference methods. In contrast to previous approaches by the Fermi collaboration and others, our non-parametric reconstruction does not rely on emission templates.

We obtain estimates for the diffuse and point-like contributions to the  $\gamma$ -ray flux. Furthermore, D<sup>3</sup>PO also provides

uncertainty information and the *a priori* unknown angular power spectrum of the diffuse contribution.

The inferred diffuse photon flux reveals the diversity of the  $\gamma$ -ray sky. We clearly reproduce the structure of the Galactic disk, bulge and local interstellar gas, all of which are primarily illuminated by photons induced by hadronic interactions of CRs with the ISM. We confirm the existence of the *Giant Fermi Bubbles*, as well as their homogeneous morphology, sharp edges, and hard spectra. Moreover, we are also able to resolve small diffuse structures; e.g., the  $\gamma$ -ray glow around *Centaurus A*.

The continuous reconstruction of the diffuse flux allows us to present the first spectral index map of the diffuse  $\gamma$ -ray sky, as well as a pseudocolor composite visualizing the spectrally different regions. Furthermore, the large-scale angular power spectrum of the diffuse emission seems to obey a pow-law with index  $2.45 \pm 0.01$  across all energy bands.

Inspired by the pseudocolor visualization, we decompose the diffuse  $\gamma$ -ray sky into a “cloud”-like and “bubble”-like emission component. The former, tracing the dense, cold ISM, is dominated by hadronic emission processes, while the latter, being morphologically and spectrally distinct, seems to be dominated by leptonic processes in hot, dilute parts of the ISM and outflows thereof. In particular, our findings indicate a preference for IC emission from the Fermi bubbles and support scenarios (Yang et al. 2013; Cheng et al. 2011; Dogiel et al. 2011; Chernyshov 2011; Carretti et al. 2013) in which the Fermi bubbles are explained by hot outflows powered by strong activities in the Galactic center region. We report further, smaller outflows of a similar population of relativistic particles at other locations.

The reconstruction of the point-like photon flux qualitatively confirms most of the sources from the second Fermi LAT source catalog. Quantitatively, we derive a preliminary catalog of source candidates that comprises 2,522 point sources. A more detailed analysis of this catalog is left for future research.

Finally, we provide upper limit fluxes for galaxy clusters with known radio halos. Our limits, although also preliminary, are comparable or tighter than the upper limits from the Fermi collaboration’s study on galaxy clusters

<sup>10</sup> Unfortunately, D<sup>3</sup>PO does not converge on an all-sky point-like uncertainty map.



**Table 4.** Overview of total flux upper limits for clusters hosting a radio (mini-)halo from the collection by Feretti et al. (2012).

cluster name	$F^{\text{up}} [\text{cm}^{-2} \text{s}^{-1}]$	$F^{(s)} [\text{cm}^{-2} \text{s}^{-1}]$
A209	$1.4 \times 10^{-10}$	$1.6 \times 10^{-10}$
A399	$1.8 \times 10^{-10}$	$4.4 \times 10^{-10}$
A401	$1.8 \times 10^{-10}$	$4.4 \times 10^{-10}$
A520	$2.1 \times 10^{-10}$	$3.1 \times 10^{-10}$
A521	$1.6 \times 10^{-10}$	$3.0 \times 10^{-10}$
A523	$2.0 \times 10^{-10}$	$4.8 \times 10^{-10}$
A545	$2.0 \times 10^{-10}$	$5.1 \times 10^{-10}$
A665	$1.2 \times 10^{-10}$	$2.6 \times 10^{-10}$
A697	$1.3 \times 10^{-10}$	$2.4 \times 10^{-10}$
A746	$1.2 \times 10^{-10}$	$1.9 \times 10^{-10}$
A754	$1.6 \times 10^{-10}$	$2.7 \times 10^{-10}$
A773	$1.2 \times 10^{-10}$	$2.0 \times 10^{-10}$
A781	$1.4 \times 10^{-10}$	$1.9 \times 10^{-10}$
A851	$1.3 \times 10^{-10}$	$1.8 \times 10^{-10}$
A1213	$1.8 \times 10^{-10}$	$2.0 \times 10^{-10}$
A1300	$1.9 \times 10^{-10}$	$3.6 \times 10^{-10}$
A1351	$1.0 \times 10^{-10}$	$1.9 \times 10^{-10}$
A1656	$1.2 \times 10^{-10}$	$1.6 \times 10^{-10}$
A1689	$1.6 \times 10^{-10}$	$2.6 \times 10^{-10}$
A1758a	$2.3 \times 10^{-10}$	$2.0 \times 10^{-10}$
A1914	$1.4 \times 10^{-10}$	$1.9 \times 10^{-10}$
A1995	$1.1 \times 10^{-10}$	$1.7 \times 10^{-10}$
A2034	$1.2 \times 10^{-10}$	$1.9 \times 10^{-10}$
A2163	$2.3 \times 10^{-10}$	$7.5 \times 10^{-10}$
A2218	$1.1 \times 10^{-10}$	$2.3 \times 10^{-10}$
A2219	$1.3 \times 10^{-10}$	$2.1 \times 10^{-10}$
A2254	$1.6 \times 10^{-10}$	$3.6 \times 10^{-10}$
A2255	$1.1 \times 10^{-10}$	$2.3 \times 10^{-10}$
A2256	$1.1 \times 10^{-10}$	$2.6 \times 10^{-10}$
A2294	$1.3 \times 10^{-10}$	$3.6 \times 10^{-10}$
A2319	$1.6 \times 10^{-10}$	$4.5 \times 10^{-10}$
A2744	$1.8 \times 10^{-10}$	$1.7 \times 10^{-10}$
A3562	$1.7 \times 10^{-10}$	$3.9 \times 10^{-10}$
RXJ0107.7+5408	$2.3 \times 10^{-10}$	$8.9 \times 10^{-10}$
CL0016+16	$1.6 \times 10^{-10}$	$2.7 \times 10^{-10}$
CL0217+70	$2.3 \times 10^{-10}$	$1.4 \times 10^{-9}$
1E0657-56	$1.5 \times 10^{-10}$	$3.6 \times 10^{-10}$
MACSJ0717.5+3745	$1.5 \times 10^{-10}$	$3.1 \times 10^{-10}$
RXCJ1314.4-2515	$1.9 \times 10^{-10}$	$4.7 \times 10^{-10}$
RXCJ1514.9-1523	$3.1 \times 10^{-10}$	$5.1 \times 10^{-10}$
RXCJ2003.5-2323	$3.1 \times 10^{-10}$	$5.1 \times 10^{-10}$
CIZA J2242.8+5301	$2.2 \times 10^{-10}$	$9.8 \times 10^{-10}$
Perseus	$4.4 \times 10^{-8}$	$7.5 \times 10^{-10}$
Ophiuchus	$3.1 \times 10^{-10}$	$1.7 \times 10^{-9}$
A1835	$1.7 \times 10^{-10}$	$2.7 \times 10^{-10}$
A2029	$9.9 \times 10^{-10}$	$3.5 \times 10^{-10}$
A2142	$1.4 \times 10^{-10}$	$2.7 \times 10^{-10}$
A2390	$3.9 \times 10^{-10}$	$4.3 \times 10^{-10}$
A2626	$1.6 \times 10^{-10}$	$3.3 \times 10^{-10}$
MRC0116+111	$1.5 \times 10^{-10}$	$2.6 \times 10^{-10}$
RBS797	$1.0 \times 10^{-10}$	$2.0 \times 10^{-10}$
RXJ1347.5-1145	$1.8 \times 10^{-10}$	$3.6 \times 10^{-10}$
RXCJ1504.1-0248	$2.9 \times 10^{-10}$	$5.1 \times 10^{-10}$

## Acknowledgments

We thank Martin Reinecke, Maksim Greiner, Sebastian Dorn, Dmitry Prokhorov, and Philipp Girichidis, as well as Elena Orlando for the insightful discussions and productive comments.

This work has been carried out in the framework of the DFG Forschergruppe 1254 “Magnetisation of Interstellar and Inter-galactic Media: The Prospects of Low-Frequency Radio Observations”. Furthermore, we thank the “MaxEnt and Bayesian Association of Australia, Inc.” for travel support in order to present preliminary results at MaxEnt 2013.

Some of the results in this publication have been derived using NUMPY/SCIPY (Oliphant 2006), MATPLOTLIB (Hunter 2007), HEALPIX (Górski et al. 2005), and especially the D<sup>3</sup>PO

algorithm (Selig & Enßlin 2013) based on the NIFTY package (Selig et al. 2013).

This research has made use of NASA’s Astrophysics Data System. We acknowledge the use of the Legacy Archive for Microwave Background Data Analysis (LAMBDA), part of the High Energy Astrophysics Science Archive Center (HEASARC). HEASARC/LAMBDA is a service of the Astrophysics Science Division at the NASA Goddard Space Flight Center.

## References

- Abdo, A. A., Ackermann, M., Ajello, M., et al., Fermi Large Area Telescope First Source Catalog, *ApJS* **188** (Jun. 2010) 405–436, [arXiv:1002.2280 \[astro-ph.HE\]](#)
- Abdo, A. A., Ackermann, M., Ajello, M., et al., The on-orbit calibration of the Fermi Large Area Telescope, *Astroparticle Physics* **32** (Oct. 2009) 193–219, [arXiv:0904.2226 \[astro-ph.IM\]](#)
- Abdo, A. A., Ackermann, M., Ajello, M., et al., Spectrum of the Isotropic Diffuse Gamma-Ray Emission Derived from First-Year Fermi Large Area Telescope Data, *Physical Review Letters* **104** no. 10, (Mar. 2010) 101101, [arXiv:1002.3603 \[astro-ph.HE\]](#)
- Ackermann, M., Ajello, M., Albert, A., et al., The Fermi Large Area Telescope on Orbit: Event Classification, Instrument Response Functions, and Calibration, *ApJS* **203** (Nov. 2012) 4, [arXiv:1206.1896 \[astro-ph.IM\]](#)
- Ackermann, M., Ajello, M., Albert, A., Atwood, W. B., & Fermi LAT Collaboration, The spectrum of isotropic diffuse gamma-ray emission between 100 MeV and 820 GeV, *ArXiv e-prints* (Oct. 2014), [arXiv:1410.3696 \[astro-ph.HE\]](#)
- Ackermann, M., Ajello, M., Albert, A., et al., Fermi LAT search for dark matter in gamma-ray lines and the inclusive photon spectrum, *Phys. Rev. D* **86** no. 2, (Jul. 2012) 022002, [arXiv:1205.2739 \[astro-ph.HE\]](#)
- Ackermann, M., Ajello, M., Allafort, A., et al., In-flight measurement of the absolute energy scale of the Fermi Large Area Telescope, *Astroparticle Physics* **35** (Jan. 2012) 346–353, [arXiv:1108.0201 \[astro-ph.IM\]](#)
- Ackermann, M., Ajello, M., Allafort, A., et al., GeV Gamma-ray Flux Upper Limits from Clusters of Galaxies, *ApJ* **717** (Jul. 2010) L71–L78, [arXiv:1006.0748 \[astro-ph.HE\]](#)
- Ackermann, M., Ajello, M., Atwood, W. B., et al., Fermi-LAT Observations of the Diffuse Gamma-Ray Emission: Implications for Cosmic Rays and the Interstellar Medium, *ArXiv e-prints* (Feb. 2012), [arXiv:1202.4039 \[astro-ph.HE\]](#)
- Ackermann, M., Albert, A., Atwood, W. B., & Fermi LAT Collaboration, The Spectrum and Morphology of the Fermi Bubbles, *ArXiv e-prints* (Jul. 2014), [arXiv:1407.7905 \[astro-ph.HE\]](#)
- Ackermann, M., Jóhannesson, G., Digel, S., et al., A method to analyze the diffuse gamma-ray emission with the Fermi Large Area Telescope, in *American Institute of Physics Conference Series*, Vol. 1085, American Institute of Physics Conference Series, ed. F. A. Aharonian, W. Hofmann, & F. Rieger. 2008, 763–766
- Atwood, W. B., Abdo, A. A., Ackermann, M., et al., The Large Area Telescope on the Fermi Gamma-Ray Space Telescope Mission, *ApJ* **697** (Jun. 2009) 1071–1102, [arXiv:0902.1089 \[astro-ph.IM\]](#)
- Bayes, T., An Essay towards Solving a Problem in the Doctrine of Chances, *Philosophical Transactions of the Royal Society* **35** (1763) 370–418, <http://journals.royalsociety.org/content/w24177406t384j06/>
- Bregon, J., Charles, E., & M. Wood for the Fermi-LAT collaboration, Fermi-LAT data reprocessed with updated calibration constants, *ArXiv e-prints* (Apr. 2013), [arXiv:1304.5456 \[astro-ph.HE\]](#)
- Carretti, E., Crocker, R. M., Staveley-Smith, L., et al., Giant magnetized outflows from the centre of the Milky Way, *Nature* **493** (Jan. 2013) 66–69, [arXiv:1301.0512 \[astro-ph.GA\]](#)
- Cheng, K.-S., Chernyshov, D. O., Dogiel, V. A., Ko, C.-M., & Ip, W.-H., Origin of the Fermi Bubble, *ApJ* **731** (Apr. 2011) L17, [arXiv:1103.1002 \[astro-ph.HE\]](#)
- Chernyshov, D., Particle acceleration and the origin of gamma-ray emission from Fermi Bubbles, *International Cosmic Ray Conference* **7** (2011) 11–18, [arXiv:1109.2619 \[astro-ph.GA\]](#)
- Conrad, J., Searches for particle dark matter with gamma-rays, in *American Institute of Physics Conference Series*, Vol. 1505, American Institute of Physics Conference Series, ed. F. A. Aharonian, W. Hofmann, & F. M. Rieger. 2012, 166–176, [arXiv:1210.4392 \[astro-ph.CO\]](#)

- Cox, R. T., Probability, Frequency and Reasonable Expectation, *American Journal of Physics* **14** (Jan. 1946) 1
- Dermer, C. D., The Extragalactic  $\gamma$  Ray Background, in *American Institute of Physics Conference Series*, Vol. 921, The First GLAST Symposium, ed. S. Ritz, P. Michelson, & C. A. Meegan. 2007, 122–126, [arXiv:0704.2888](#)
- Dermer, C. D., Strong, A. W., Orlando, E., Tibaldo, L., & for the Fermi Collaboration, Determining the Spectrum of Cosmic Rays in Interstellar Space from the Diffuse Galactic Gamma-Ray Emissivity, *ArXiv e-prints* (Jul. 2013), [arXiv:1307.0497 \[astro-ph.HE\]](#)
- Dogiel, V. A., Chernyshov, D. O., Cheng, K., et al., Fermi Bubbles as a Result of Star Capture in the Galactic Center, *ArXiv e-prints* (Sep. 2011), [arXiv:1109.6087 \[astro-ph.HE\]](#)
- Enßlin, T., Information field theory, in *American Institute of Physics Conference Series*, Vol. 1553, American Institute of Physics Conference Series, ed. U. von Toussaint. 2013, 184–191, [arXiv:1301.2556 \[astro-ph.IM\]](#)
- Enßlin, T., Astrophysical data analysis with information field theory, in *American Institute of Physics Conference Series*, American Institute of Physics Conference Series. 2014, [arXiv:1405.7701 \[astro-ph.IM\]](#)
- Enßlin, T. A. & Frommert, M., Reconstruction of signals with unknown spectra in information field theory with parameter uncertainty, *Phys. Rev. D* **83** no. 10, (May 2011) 105014–, [arXiv:1002.2928 \[astro-ph.IM\]](#)
- Enßlin, T. A., Frommert, M., & Kitaura, F. S., Information field theory for cosmological perturbation reconstruction and nonlinear signal analysis, *Phys. Rev. D* **80** no. 10, (Nov. 2009) 105005–, [arXiv:0806.3474](#)
- Feretti, L., Giovannini, G., Govoni, F., & Murgia, M., Clusters of galaxies: observational properties of the diffuse radio emission, *A&A Rev.* **20** (May 2012) 54, [arXiv:1205.1919 \[astro-ph.CO\]](#)
- Finkbeiner, D. P., Davis, M., & Schlegel, D. J., Extrapolation of Galactic Dust Emission at 100 Microns to Cosmic Microwave Background Radiation Frequencies Using FIRAS, *ApJ* **524** (Oct. 1999) 867–886, [astro-ph/9905128](#)
- Górski, K. M., Hivon, E., Banday, A. J., et al., HEALPix: A Framework for High-Resolution Discretization and Fast Analysis of Data Distributed on the Sphere, *ApJ* **622** (Apr. 2005) 759–771, [arXiv:astro-ph/0409513](#)
- Greiner, M. & Enßlin, T. A., Conversion between the power spectra of a field and its logarithm, *ArXiv e-prints* (Dec. 2013), [arXiv:1312.1354 \[astro-ph.CO\]](#)
- Guglielmetti, F., Fischer, R., & Dose, V., Background-source separation in astronomical images with Bayesian probability theory - I. The method, *MNRAS* **396** (Jun. 2009) 165–190, [arXiv:0903.2342 \[astro-ph.IM\]](#)
- Haslam, C. G. T., Salter, C. J., Stoffel, H., & Wilson, W. E., A 408 MHz all-sky continuum survey. II - The atlas of contour maps, *A&AS* **47** (Jan. 1982) 1, ADS
- Hunter, J. D., Matplotlib: A 2D graphics environment, *Computing In Science & Engineering* **9** no. 3, (2007) 90–95
- Jasche, J., Kitaura, F. S., Wandelt, B. D., & Enßlin, T. A., Bayesian power-spectrum inference for large-scale structure data, *MNRAS* **406** (Jul. 2010) 60–85, [arXiv:0911.2493 \[astro-ph.CO\]](#)
- Jasche, J. & Wandelt, B. D., Methods for Bayesian Power Spectrum Inference with Galaxy Surveys, *ApJ* **779** (Dec. 2013) 15, [arXiv:1306.1821 \[astro-ph.CO\]](#)
- Johannesson, G., Orlando, E., & for the Fermi-LAT collaboration, Accounting for the Sun and the Moon in Fermi-LAT Analysis, *ArXiv e-prints* (Jun. 2013), [arXiv:1307.0197 \[astro-ph.IM\]](#)
- Large, M. I., Quigley, M. J. S., & Haslam, C. G. T., A new feature of the radio sky, *MNRAS* **124** (1962) 405
- Moskalenko, I. V. & Strong, A. W., Anisotropic Inverse Compton Scattering in the Galaxy, *ApJ* **528** (Jan. 2000) 357–367, [astro-ph/9811284](#)
- Nolan, P. L., Abdo, A. A., Ackermann, M., et al., Fermi Large Area Telescope Second Source Catalog, *ApJS* **199** (Apr. 2012) 31, [arXiv:1108.1435 \[astro-ph.HE\]](#)
- Oliphant, T. 2006, *A Guide to NumPy*, Trelgol Publishing
- Oppermann, N., Selig, M., Bell, M. R., & Enßlin, T. A., Reconstruction of Gaussian and log-normal fields with spectral smoothness, [arXiv:1210.6866 \[astro-ph.IM\]](#)
- Planck Collaboration, Planck 2013 results. XI. All-sky model of thermal dust emission, *ArXiv e-prints* (Dec. 2013), [arXiv:1312.1300](#)
- Planck Collaboration, Planck intermediate results. IX. Detection of the Galactic haze with Planck, *A&A* **554** (Jun. 2013) A139, [arXiv:1208.5483 \[astro-ph.GA\]](#)
- Planck Collaboration, Planck intermediate results. XXVIII. Interstellar gas and dust in the Chamaeleon clouds as seen by Fermi LAT and Planck, *ArXiv e-prints* (Sep. 2014), [arXiv:1409.3268 \[astro-ph.HE\]](#)
- Portillo, S. K. N. & Finkbeiner, D. P., Sharper Fermi LAT Images: instrument response functions for an improved event selection, *ArXiv e-prints* (Jun. 2014), [arXiv:1406.0507 \[astro-ph.IM\]](#)
- Schmitt, J., Starck, J. L., Casandjian, J. M., Fadili, J., & Grenier, I., Poisson denoising on the sphere: application to the Fermi gamma ray space telescope, *A&A* **517** (Jul. 2010) A26, [arXiv:1003.5613 \[astro-ph.IM\]](#)
- Schmitt, J., Starck, J. L., Casandjian, J. M., Fadili, J., & Grenier, I., Multichannel Poisson denoising and deconvolution on the sphere: application to the Fermi Gamma-ray Space Telescope, *A&A* **546** (Oct. 2012) A114, [arXiv:1206.2787 \[astro-ph.IM\]](#)
- Selig, M., Bell, M. R., Junkewitz, H., et al., NIFTY - Numerical Information Field Theory - a versatile Python library for signal inference, *A&A* **554** (Apr. 2013) A26, [arXiv:1301.4499 \[astro-ph.IM\]](#)
- Selig, M. & Enßlin, T. A., Denoising, Deconvolving, and Decomposing Photon Observations, [arXiv:1311.1888 \[astro-ph.IM\]](#)
- Shannon, C. E., A mathematical theory of communication, *Bell System Technical Journal* **27** (1948) 379–423
- Sreekumar, P., Bertsch, D. L., Dingus, B. L., et al., EGRET Observations of the Extragalactic Gamma-Ray Emission, *ApJ* **494** (Feb. 1998) 523–534, [astro-ph/9709257](#)
- Strong, A. W., Moskalenko, I. V., & Reimer, O., Diffuse Continuum Gamma Rays from the Galaxy, *ApJ* **537** (Jul. 2000) 763–784, [astro-ph/9811296](#)
- Su, M. & Finkbeiner, D. P., Evidence for Gamma-Ray Jets in the Milky Way, *ApJ* **753** (Jul. 2012) 61, [arXiv:1205.5852 \[astro-ph.HE\]](#)
- Su, M., Slatyer, T. R., & Finkbeiner, D. P., Giant Gamma-ray Bubbles from Fermi-LAT: Active Galactic Nucleus Activity or Bipolar Galactic Wind?, *ApJ* **724** (Dec. 2010) 1044–1082, [arXiv:1005.5480 \[astro-ph.HE\]](#)
- Wandelt, B. D., Larson, D. L., & Lakshminarayanan, A., Global, exact cosmic microwave background data analysis using Gibbs sampling, *Phys. Rev. D* **70** no. 8, (Oct. 2004) 083511, [arXiv:astro-ph/0310080](#)
- Wiener, N. 1949, *Extrapolation, Interpolation and Smoothing of Stationary Time Series, with Engineering Applications*, Technology Press and Wiley, New York, note: Originally issued in Feb 1942 as a classified Nat. Defense Res. Council Rep.
- Yang, H.-Y. K., Ruszkowski, M., & Zweibel, E., The Fermi bubbles: gamma-ray, microwave and polarization signatures of leptonic AGN jets, *MNRAS* **436** (Dec. 2013) 2734–2746, [arXiv:1307.3551 \[astro-ph.GA\]](#)
- Yang, R.-z., Aharonian, F., & Crocker, R., The Fermi Bubbles Revisited, *ArXiv e-prints* (Feb. 2014), [arXiv:1402.0403 \[astro-ph.HE\]](#)

## Appendix A: Data Analysis

### Appendix A.1: Data Selection

In this work, we analyze the 5.5 years of observational data taken by the Fermi LAT; i.e., data from mission weeks 9 to 296 (mission elapsed time 239,557,417 s to 413,199,625 s). The data are subject to multiple restrictions and cuts detailed in the following.

For our analysis we exclusively consider events classified as P7REP\_CLEAN\_V15 in the reprocessed Pass 7 data set. The CLEAN events, which are “cleaned” of CR interactions with the instrument, are recommended for studies of the diffuse  $\gamma$ -ray emission.<sup>11</sup> Events with inclination angles above  $52^\circ$  and zenith angles above  $100^\circ$  are excluded in order to suppress contaminations from CRs and the Earth’s limb (Atwood et al. 2009).<sup>12</sup> In addition, we apply a (non-standard) cut with respect to the angular distance to the

<sup>11</sup> For further details regarding the Fermi LAT data products see <http://fermi.gsfc.nasa.gov/ssc/data/>.

<sup>12</sup> The exact filter expression reads “DATA\_QUAL>0 && LAT\_CONFIG==1 && ABS(ROCK\_ANGLE)<52 && ZENITH<100”.

Sun that we require to exceed  $20^\circ$ . This way, almost all Solar  $\gamma$ -rays are rejected at the price of reducing the total number of events by less than 3%. A similar procedure regarding the moon is conceivable but ignored, because its contribution is negligible.

The individual events are labeled **FRONT** or **BACK** according to whether the photon has been converted in the front or back section of the LAT instrument. We retain this labeling, but combine those data vectors by a direct sum; i.e.,

$$\mathbf{d} = \mathbf{d}^{\text{FRONT}} \oplus \mathbf{d}^{\text{BACK}} = (\mathbf{d}^{\text{FRONT}}, \mathbf{d}^{\text{BACK}})^\top. \quad (\text{A.1})$$

The selected events are binned in nine (logarithmically equally spaced) energy bins ranging from 0.6 to 307.2 GeV, cf. Tab. 1. We also apply a spatial binning of the events into all-sky count maps using a HEALPIX discretization with  $n_{\text{side}} = 128$ , which corresponds to 196,608 pixels with a size of roughly  $64 \mu\text{sr} \approx (0.46^\circ)^2$  each.

For a proper deconvolution, our analysis has to take the LAT’s PSF and exposure into account. The instrumental response functions of the Fermi LAT (Atwood et al. 2009; Abdo et al. 2009; Ackermann et al. 2012a), which are essential therefor, have been improved in the reprocessed Pass 7 release, and are available within the Fermi Science Tools. According to our event selection, we make use of the `P7REP_CLEAN_V15::FRONT` and `BACK` IRFs, respectively. These can be assumed to be accurately calibrated, although further improvements, especially at low energies, are under discussion (Portillo & Finkbeiner 2014). Given the IRFs, the exposure ( $\varepsilon_{ij}^{\text{FRONT}}, \varepsilon_{ij}^{\text{BACK}}$ ) for each HEALPIX pixel  $i$  and each energy band  $j$  can be retrieved from the data archive. In order to compute  $\varepsilon$ , the Sun exposure is subtracted from the “standard” exposure due to the chosen rejection of potential Solar events (Johannesson et al. 2013). The PSF of the Fermi LAT is a function of position and energy  $E$ . Its shape varies slightly with spatial translation and sharpens strongly with increasing energy. The forward application of the PSF is a linear operation that can be implemented in form of a convolution matrix evaluating the PSF at each pixel center and for each energy band. This matrix is fairly sparse because of the vanishing tails of the PSF, and is computed beforehand. The exposure and the PSF define the instrument response operator  $\mathbf{R}$ ,

$$R_{ij}(x) \propto \frac{1}{(E_j^{\text{max}} - E_j^{\text{min}})} \begin{pmatrix} \varepsilon_{ij}^{\text{FRONT}} \times \text{PSF}_i^{\text{FRONT}}(E_j^{\text{mid}}, x) \\ \varepsilon_{ij}^{\text{BACK}} \times \text{PSF}_i^{\text{BACK}}(E_j^{\text{mid}}, x) \end{pmatrix}, \quad (\text{A.2})$$

up to a proportionality constant that can absorb numerical factors and physical units. Notice that this definition does not include a spectral convolution; i.e., there is no cross-talk between different energy bands.

The primary target of our analysis is the physical photon flux  $\phi = \phi(x)$ , which is a function of position  $x \in \Omega$ . Here, the position space  $\Omega$  is the observational sphere, and the position  $x$  might be given in spherical coordinates  $(\varphi, \theta)$ , or in Galactic longitude and latitude  $(l, b)$ .

The response operator  $\mathbf{R}$  describes the mapping of a photon flux  $\phi$  to  $\lambda = \mathbf{R}\phi$  by a convolution with the IRFs; i.e.,

$$\lambda_{ij} = \int_{\Omega} dx R_{ij}(x) \phi(x), \quad (\text{A.3})$$

where  $\lambda$  describes the noiseless (non-integer) number of photons one expects to observe through the IRFs given some photon flux in the sky. This expected number of counts  $\lambda$  relates to the observed (integer) photon counts  $\mathbf{d}$  by a noise process, which is part of the statistical model detailed in the next section.

## Appendix A.2: Inference Algorithm

The foundation of the analysis presented in this work is the D<sup>3</sup>PO inference algorithm derived by Selig & Enßlin (2013) that targets the denoising, deconvolution and decomposition of photon observations. Without going into technical details, we briefly review the underlying assumptions and characteristics of the D<sup>3</sup>PO algorithm in the following.

The observed photon count data  $\mathbf{d}$  carries information about the astrophysical photon flux  $\phi$ , as well as noise and instrumental imprints. In order to optimally reconstruct  $\phi$  given  $\mathbf{d}$ , we incorporate our knowledge about the actual measurement in a data model that consists of deterministic relations and probabilistic processes. Hence, D<sup>3</sup>PO is a probabilistic algorithm conducting Bayesian inference.

We can assume the photon counts to suffer from Poissonian shot noise; i.e., the data entries  $d_{ij}$  are the outcomes of statistically independent Poisson processes given an expected number of counts  $\lambda_{ij}$  each. Especially in low photon flux regions and at high energies, where the signal-to-noise ratios are worst, using a Poissonian likelihood allows for an accurate noise treatment whereas Gaussian noise approximations often fail.

D<sup>3</sup>PO’s deconvolution task covers the correction of all effects that trace back to the instrumental response  $\mathbf{R}$ . As discussed in Sect. A.1, this response establishes a relation between the astrophysical photon flux  $\phi$  and the expected counts  $\lambda$  by taking the IRFs of the Fermi LAT fully into account. Since we suppose the IRFs to be thoroughly calibrated (to the best of our knowledge), this relation is deterministic.

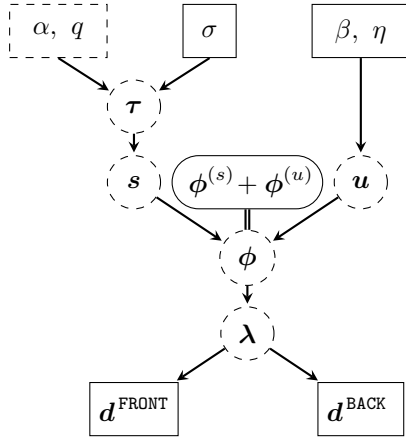
The total photon flux  $\phi$  consists of many different contributions that can be divided into two morphological classes, diffuse and point-like contributions. Diffuse emission, which is produced by the interaction of CRs with the ISM, unresolved point sources and extragalactic background, is characterized by spatially smooth fluctuations. On the contrary, point-like emission is fairly local originating primarily from resolved point sources. The D<sup>3</sup>PO algorithm reconstructs the total photon flux as the sum of a diffuse and point-like flux contribution; i.e.,

$$\phi = \phi^{(s)} + \phi^{(u)} = \phi_0 (e^{\mathbf{s}} + e^{\mathbf{u}}), \quad (\text{A.4})$$

where  $\phi_0$  is a constant absorbing numerical factors and flux units, and the exponentiation is applied pixelwise to the diffuse and point-like signal fields,  $\mathbf{s}$  and  $\mathbf{u}$ . Those signal fields describe the dimensionless logarithmic flux ensuring the positivity of the physical photon flux in a natural way. Although the algorithm deals with the  $\mathbf{s}$  and  $\mathbf{u}$  fields for numerical reasons, we only regard the fluxes  $\phi^{(s)}$  and  $\phi^{(u)}$  in the following as they are physical.

We can incorporate our naive understanding of “diffuse” and “point-like” by introducing prior assumptions. Embedding *a priori* knowledge on the solution, of course, biases the inference. However, priors also remedy the degeneracy





**Fig. A.1.** Graphical model of the model parameters  $\alpha$ ,  $q$ ,  $\sigma$ ,  $\beta$ , and  $\eta$ , the logarithmic angular power spectrum  $\tau$ , the diffuse and point-like signal fields,  $\mathbf{s}$  and  $\mathbf{u}$ , the photon fluxes,  $\phi$ ,  $\phi^{(s)}$ , and  $\phi^{(u)}$ , and the expected and observed number of photons,  $\lambda$  and  $\mathbf{d}$ .

of the inference problem as they suppress counterintuitive solutions.

The diffuse photon flux  $\phi^{(s)}$ , being spatially smooth, is expected to exhibit spatial correlation. Without enforcing concrete spatial features, such as a Galactic profile, we assume  $\phi^{(s)}$  to obey multivariate log-normal statistics. Assuming, furthermore, statistical homogeneity and isotropy, the underlying covariance is determined by an *a priori* unknown angular power spectrum. In order to retain a flexible handle on this power spectrum, we further introduce hyperpriors (cf. e.g., Enßlin & Frommert 2011; Oppermann et al. 2012; Selig & Enßlin 2013). We assume a (asymptotically) uniform prior for the logarithmic angular power and a spectral smoothness prior as suggested by Oppermann et al. (2012). This introduces scalar model parameters  $\alpha$ ,  $q$ , and  $\sigma$ .

The point-like photon flux  $\phi^{(u)}$  exhibits strong features that appear to be fairly rare and local. We assume  $\phi^{(u)}$  to follow statistically independent inverse-Gamma distributions described by the model parameters  $\beta$  and  $\eta$ .

For a detailed derivation and discussion of the probabilistic model D<sup>3</sup>PO is based on, we refer to Selig & Enßlin (2013). An illustrative graphical model of the introduced hierarchy of Bayesian parameters is shown in Fig. A.1.

### Appendix A.3: Analysis Procedure

In theory, we could apply the D<sup>3</sup>PO algorithm to the whole data set at once. However, it is computationally more efficient to exploit the spectral separability of the response model by applying the algorithm to each energy band individually, cf. Eq. A.2. In order to exploit spectral correlations, we propose to align the priors of the diffuse component after an initial inference run by defining a common angular power spectrum. This yields a three-step analysis procedure detailed in the following.

**Initial Inference:** The D<sup>3</sup>PO algorithm is applied to each energy band separately, which can be done in parallel.

We fix the model parameters with fairly soft constraints, by setting  $\alpha = 1$ ,  $q = 10^{-12}$ ,  $\sigma = 10$ ,  $\beta = \frac{3}{2}$ , and  $\eta = 10^{-2}$ . The limit of  $(\alpha, q) \rightarrow (1, 0)$  leads to uniform prior for the logarithmic angular power spectrum  $\tau$  of the diffuse photon flux (Enßlin & Frommert 2011), but choosing a non-zero  $q$  is numerically more stable. The spectral smoothness parameter  $\sigma$  is the *a priori* standard deviation of the second derivative of  $\tau = \tau_\ell$  with respect to the logarithm of the angular quantum number  $\ell$ ; i.e.,  $\sigma$  describes the tolerance of deviations from a power-law shape (Oppermann et al. 2012). The parameter tuple  $(\beta, \eta)$  determines the slope and scale of the inverse-Gamma prior of the point-like photon flux. While a slope of  $\frac{3}{2}$  is generally applicable, the scale, for which we find  $10^{-2}$  fitting, has to be adapted according to the chosen resolution (Selig & Enßlin 2013).

D<sup>3</sup>PO solves an inference problem that is non-linear and, in general, non-convex. To circumvent a dependence on its initialization, D<sup>3</sup>PO can generate suitable starting values by solving a coarse grained inference problem first. For this purpose only, we provide a binary exposure masking the most prominent point sources.

**Prior Alignment:** The prior of the diffuse component describes our *a priori* expectation of how spatially smooth the emission is. If we find diffuse structures of a certain size at one energy band, we can expect to find similar structures at neighboring bands, especially since most diffuse emission processes exhibit power-law-like energy spectra. Thus, we expect significant spectral correlations, in particular for prominent features such as the Galactic bulge, for example. Since the incorporation of a spectral convolution in the response is computationally infeasible, we impose an aligning of the diffuse priors to exploit spectral correlations, nonetheless.

The diffuse prior is defined by the logarithmic angular power spectrum  $\tau$ . As discussed in Sec. 3.4, we find a rough power-law behavior of the power spectra with deviations due to the Galactic disk and finite exposure. Fig. 12 shows the results of the initial inference, in particular including a power spectrum fit averaged across the energy bands. This average spectrum defines the aligned prior. Notice that the apparent excess of small-scale power for high energy bands, comparing inferred and aligned power spectra, remedies potential perception thresholds occurring during the inference (Enßlin & Frommert 2011).

Afterwards, we also align the diffuse maps within the initially masked regions according to the aligned prior in order to avoid artifacts due to initialization.<sup>13</sup>

The alignment of the point-like priors, through  $\beta$  and  $\eta$ , has proven ineffective in tests and is therefore omitted.

**Final Inference:** The D<sup>3</sup>PO algorithm is applied to each energy band separately, again. For this run, however, we keep the (aligned) angular power spectrum fixed and provide the aligned diffuse maps as starting values. Hence, the initially used binary mask is not required any more. Notice that a fixed angular power spectrum renders the model parameters  $\alpha$ ,  $q$ , and  $\sigma$  obsolete.

<sup>13</sup> We minimize the prior term,  $\mathbf{s}^\dagger \mathbf{S}^{-1} \mathbf{s}$ , but only for  $s(x|x = (\varphi, \theta) \in \text{mask} \wedge x \sim (\ell, m) \neq (2N, 0))$  ensuring the preservation of the Galactic profile and the reconstructed field values outside the mask.

