

# Core collapse with rotation and magnetic fields: explosions, black holes, magnetars

Martin Obergaulinger

CAMAP, Departament d'Astronomia i Astrofísica, Universitat de València

The Progenitor-Supernova-Remnant Connection, Ringberg, July 25, 2017



In collaboration with  
Miguel Ángel Aloy, Pablo Cerdá-Durán, Tomek Rembiasz (Valencia)

We acknowledge support from the

- ▶ European Research Council (grant CAMAP-259276)
- ▶ Spanish Ministry of Economy and Finance (AYA2013-40979-P)
- ▶ Valencian Community (PROMETEOII/2014-069)

and computing time

- ▶ in the Spanish Supercomputing Network grants AECT-2016-1-0008 on *Pirineus* (Consorci de Serveis Universitaris de Catalunya, CSUC), AECT-2016-2-0012 on *Picasso* (University of Málaga), AECT-2016-3-0005, AECT-2017-1-0013, AECT-2017-2-0006 on *MareNostrum* (BSC) and *Finis Terrae 2* (Santiago de Compostela)
- ▶ and on clusters *Tirant* and *Lluïsvives* at the UV.



# Progenitor

- ▶ wide mass range: from 8 to many 10s of solar masses
- ▶ at metallicities from zero to solar
- ▶ possibly in binaries
- ▶ rotation and magnetic fields
- ▶ quite different profiles of  $\rho$ ,  $Y_e$ ,  $T$
- ▶ different positions of Si,... shells
- ▶ wide variety of compactness
- ▶ widely differing rates of mass loss
- ▶ transfer of mass, angular momentum
- ▶ closely coupled: rotation allows for dynamos, magnetic fields slow down rotation
- ▶ important consequences for mixing, mass loss



# Progenitor

- ▶ wide mass range: from 8 to many 10s of solar masses
- ▶ at metallicities from zero to solar
- ▶ possibly in binaries
- ▶ rotation and magnetic fields
- ▶ quite different profiles of  $\rho$ ,  $Y_e$ ,  $T$
- ▶ different positions of Si,... shells
- ▶ wide variety of compactness
- ▶ widely differing rates of mass loss
- ▶ transfer of mass, angular momentum
- ▶ closely coupled: rotation allows for dynamos, magnetic fields slow down rotation
- ▶ important consequences for mixing, mass loss





# Progenitor

- ▶ wide mass range: from 8 to many 10s of solar masses
- ▶ at metallicities from zero to solar
- ▶ possibly in binaries
- ▶ rotation and magnetic fields
- ▶ quite different profiles of  $\rho$ ,  $Y_e$ ,  $T$
- ▶ different positions of Si,... shells
- ▶ wide variety of compactness
- ▶ widely differing rates of mass loss
- ▶ transfer of mass, angular momentum
- ▶ closely coupled: rotation allows for dynamos, magnetic fields slow down rotation
- ▶ important consequences for mixing, mass loss



# Progenitor

- ▶ wide mass range: from 8 to many 10s of solar masses
- ▶ at metallicities from zero to solar
- ▶ possibly in binaries
- ▶ rotation and magnetic fields
- ▶ quite different profiles of  $\rho$ ,  $Y_e$ ,  $T$
- ▶ different positions of Si,... shells
- ▶ wide variety of compactness
- ▶ widely differing rates of mass loss
- ▶ transfer of mass, angular momentum
- ▶ closely coupled: rotation allows for dynamos, magnetic fields slow down rotation
- ▶ important consequences for mixing, mass loss



# The collapse

## multi-scale problem

- ▶ star: blue or red giant
- ▶ pre-collapse core: few 1000 km
- ▶ PNS: few 10 km
- ▶ stalled shock: few 100 km
- ▶ large (magnetic) Reynolds number
- ▶ many dynamical time scales

## multi-physics problem

- ▶ multi-dimensional (GR)(M)HD
- ▶ turbulence
- ▶ nuclear equation of state
- ▶ neutrino transport (from optically thick to transparent),  
neutrino-matter interactions
- ▶ nuclear burning



# The aftermath

## Explosions

- ▶ “ordinary” SNe of  $\sim 10^{51}$  erg showing different spectral types and light-curves
  - ▶ more exotic(?) types: hypernovae, GRB-SNe, but also under-energetic ones
  - ▶ all fairly asymmetric
  - ▶ a considerable fraction of failed explosions
- ▶ pulsars with moderate rotation and magnetic fields
  - ▶ magnetars: ultra-strong fields (dipole component), slow rotation
  - ▶ remnants: strong asymmetries, mixing
  - ▶ BHs, possibly with a mass gap to NSs



# Physics and numerics

## $\nu$ -transport: ALCAR, [Just et al., 2015](#)

- ▶ multi-D MHD
- ▶ TOV gravity
- ▶ spectral two-moment  $\nu$  transport with  $\mathcal{O}(v/c)$  velocity terms; no gravitational terms
- ▶ basic interactions; no pair processes
- ▶ microphysical EOS
- ▶ used in 2d simulations of collapse and of post-merger tori
- ▶ FV-UCT scheme with high-order MP reconstruction

## and improvements since then

- ▶ gravitational terms (redshift, observer-time correction) in transport and MHD in the  $\mathcal{O}(v/c)$  plus formulation of [Endeve et al. \(2012\)](#)
- ▶ pair processes: NN-bremsstrahlung and electron-positron annihilation



# Two-moment neutrino transport

- ▶ 0<sup>th</sup> moment: conservation law for neutrino energy:

$$\partial_t E + \nabla_j (F^j + v^j E) + \mathcal{V}_0 + \mathcal{G}_0 = \mathcal{C}^0. \quad (1)$$

- ▶ 1<sup>st</sup> moment: and for neutrino momentum

$$\partial_t F^i + c^2 \nabla_j (P^{ij} + v^j F^i) + \mathcal{V}_1^i + \mathcal{G}_1^i = \mathcal{C}^{1,i}. \quad (2)$$

- ▶  $P$ , the neutrino pressure tensor, is a local function of  $E$  and  $\vec{F}$ , which interpolates between the limits of diffusion,  $P = E/3 \text{ diag}(1, 1, 1)$ , and free streaming,  $P^{ij} = E F^i F^j / F^2$ .
- ▶  $\mathcal{V}, \mathcal{G}$  are the velocity and gravity terms coupling neutrino energy bins
- ▶  $\mathcal{C}$  are the neutrino-matter interaction terms: emission, absorption, scattering (potentially quite stiff).



# Microphysics

## Reactions with matter

- ▶  $n + \nu_e \rightleftharpoons p^+ + e^-$
- ▶  $p^+ + \bar{\nu}_e \rightleftharpoons n + e^-$
- ▶  $(A, Z) + \nu_e \rightleftharpoons (A, Z + 1) + e^-$
- ▶  $n/p + \nu_X \rightleftharpoons n/p + \nu_X$
- ▶  $(A, Z) + \nu_X \rightleftharpoons (A, Z) + \nu_X$
- ▶  $e + \nu_X \rightleftharpoons e + \nu_X$
- ▶  $e^- + e^+ \rightleftharpoons \nu_X + \bar{\nu}_X$
- ▶  $N + N \rightleftharpoons N + N + \nu_X + \bar{\nu}_X$

- ▶ implementation following **Rampp & Janka (2002)**
- ▶ annihilation: **Pons et al. (1998)**
- ▶ bremsstrahlung: **Hannestad & Raffelt (1998)**
- ▶ equation of state for nuclear matter of **Lattimer & Swesty, 1991** with incompressibility of  $K = 220 \text{ MeV}$



# Context and questions

## Selected previous studies on collapse with magnetic fields and (mostly) rotation

Meier et al. (1976), Bisnovatyi-Kogan et al. (1976), Müller & Hillebrandt (1979), Akiama et al. (2003), Thompson et al. (2005), MO et al. (2005,2009,2014), Kotake et al. (2004), Burrows et al. (2007), Dessart et al. (2007), Endeve et al. (2010,2012), Winteler et al. (2012), Mösta et al. (2014,2015)

- ▶ field amplification by compression, winding, convection and SASI (dynamo), MRI
- ▶ turbulence and small-scale viscosity, but also large-scale coupling across scales of several turbulent eddies
- ▶ transport of angular momentum and loss of centrifugal support
- ▶ jet formation

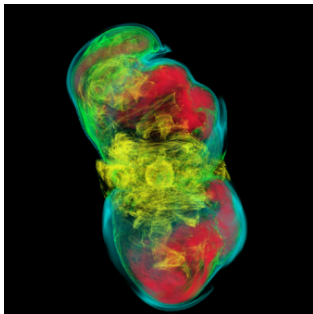




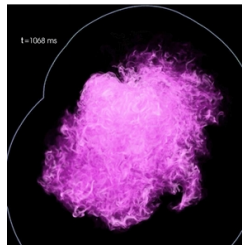
# Context and questions

## Selected previous studies on collapse with magnetic fields and (mostly) rotation

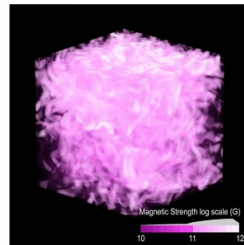
Meier et al. (1976), Bisnovatyi-Kogan et al. (1976), Müller & Hillebrandt (1979), Akiama et al. (2003), Thompson et al. (2005), MO et al. (2005,2009,2014), Kotake et al. (2004), Burrows et al. (2007), Dessart et al. (2007), Endeve et al. (2010,2012), Winteler et al. (2012), Mösta et al. (2014,2015)



Mösta et al. (2014)



Endeve et al. (2012)



# Context and questions

## Selected previous studies on collapse with magnetic fields and (mostly) rotation

Meier et al. (1976), Bisnovatyi-Kogan et al. (1976), Müller & Hillebrandt (1979), Akiama et al. (2003), Thompson et al. (2005), MO et al. (2005,2009,2014), Kotake et al. (2004), Burrows et al. (2007), Dessart et al. (2007), Endeve et al. (2010,2012), Winteler et al. (2012), Mösta et al. (2014,2015)

## We are interested in

- ▶ the viability of progenitors for collapsars,
- ▶ the question whether explosion or BH formation occurs,
- ▶ and of course all the above.



# Progenitors

## 35OC/B (Woosley & Heger, 2006)

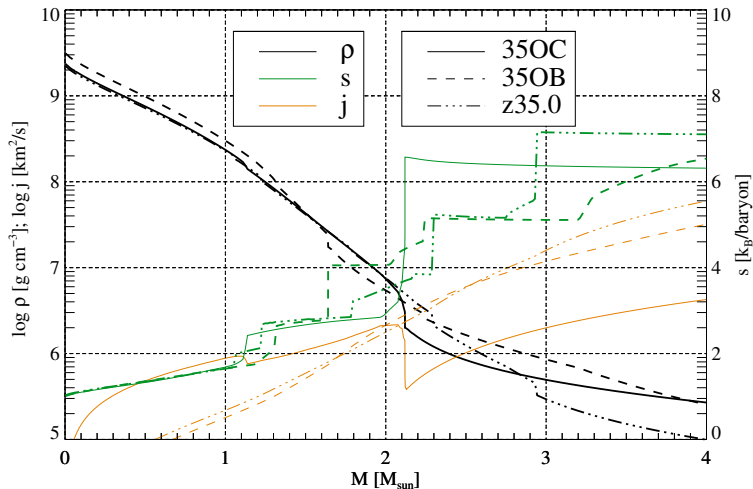
- ▶  $M_{\text{ZAMS}} = 35 M_{\odot}$
- ▶ stellar evolution includes rotation and magnetic fields according to the [Spruit \(2002\)](#) dynamo
- ▶ mass loss rate is a parameter of the stellar evolution modelling → masses at collapse  $\sim 28 M_{\odot}$  and  $\sim 21 M_{\odot}$
- ▶ rapid rotation at collapse
- ▶ compactness ([O'Connor & Ott, 2011](#))  $\xi_{2.5} = 0.49$  (35OC) and  $\xi_{2.5} = 0.56$  (35OB)
- ▶ models with original magnetic field and with weak and strong artificial fields

## z35.0 (Woosley et al., 2002)

- ▶  $M_{\text{ZAMS}} = 35 M_{\odot}$
- ▶ zero metallicity
- ▶  $\xi_{2.5} = 0.56$
- ▶ neither rotation nor magnetic fields in the stellar evolution model
- ▶ artificial moderate and rapid rotation and magnetic fields



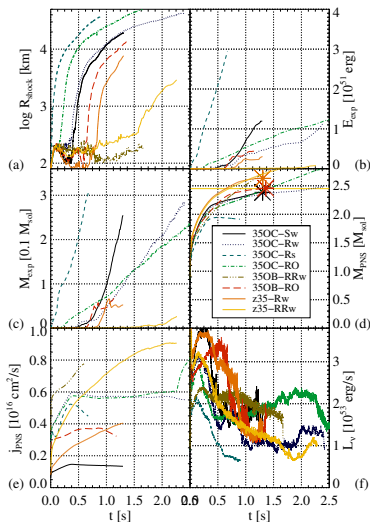
# Progenitors



(a)

Pre-collapse density, entropy, and specific angular momentum profiles

# Overview (Obergaulinger & Aloy, 2017)

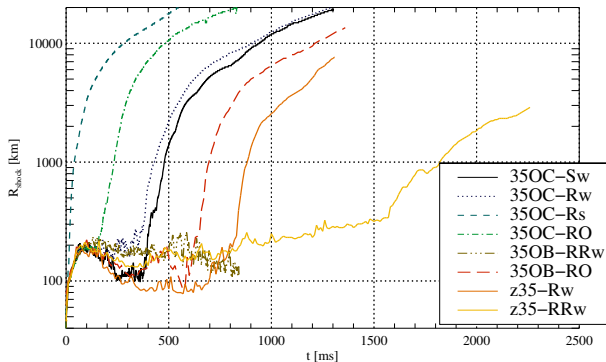


- ▶ high compactness does not completely suppress explosions
- ▶ explosions set in fairly late (correlation with the accretion of core interface)
- ▶ fairly high explosion energies; few  $0.1 M_{\odot}$  ejecta
- ▶ high PNS masses and high accretion rates  $\rightarrow$  many collapse to BH within seconds after bounce
- ▶ rapidly rotating PNS's with strong fields
- ▶ moderately Kerr BH's
- ▶ fast rotation decreases  $\nu$  luminosities
- ▶ variety of explosion mechanisms from  $\nu$ -driven to magneto-rotational



# Model 35OC-Sw: neutrino-driven explosion

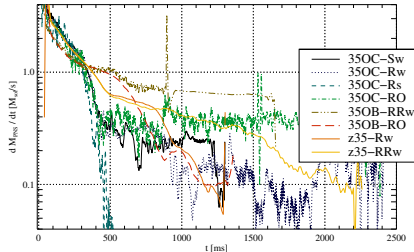
- ▶ explosion after a phase of shock stagnation
- ▶ ejecta energy and mass increases stronger than any other model except for 35OC-Rs
- ▶ neutrino heating and hydrodynamic instabilities
- ▶ shock expansion starts when the interface of the iron core is accreted
- ▶ very oblate ejecta
- ▶ PNS (soon to be



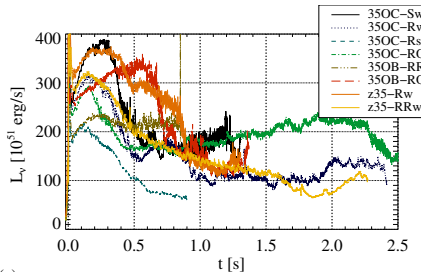
(a)

# Model 35OC-Sw: neutrino-driven explosion

- ▶ explosion after a phase of shock stagnation
- ▶ ejecta energy and mass increases stronger than any other model except for 35OC-Rs
- ▶ neutrino heating and hydrodynamic instabilities
- ▶ shock expansion starts when the interface of the iron core is accreted
- ▶ very oblate ejecta
- ▶ PNS (soon to be



(a)

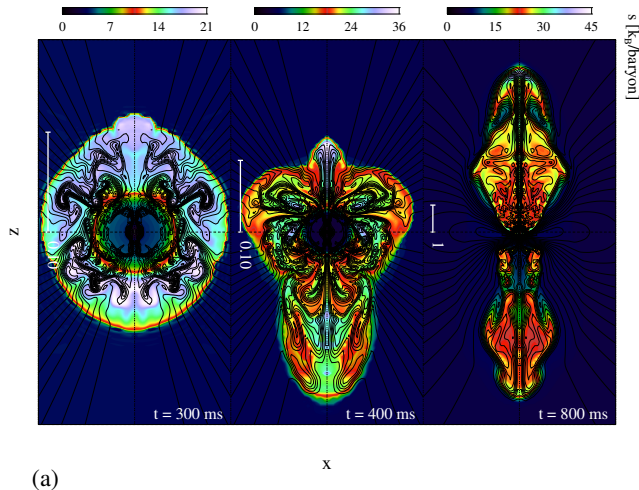


(a)



# Model 35OC-Sw: neutrino-driven explosion

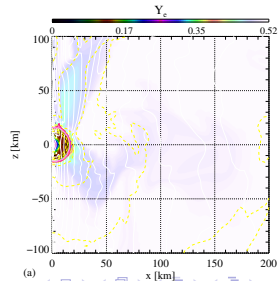
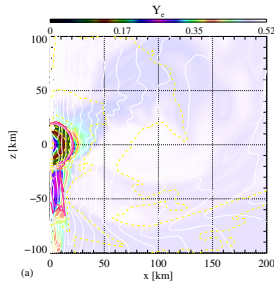
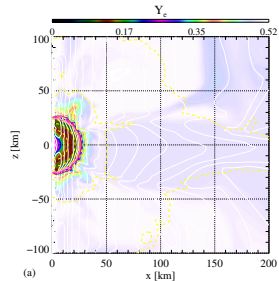
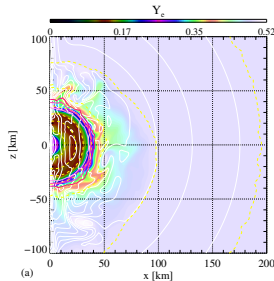
- ▶ explosion after a phase of shock stagnation
- ▶ ejecta energy and mass increases stronger than any other model except for 35OC-Rs
- ▶ neutrino heating and hydrodynamic instabilities
- ▶ shock expansion starts when the interface of the iron core is accreted
- ▶ very oblate ejecta
- ▶ PNS (soon to be





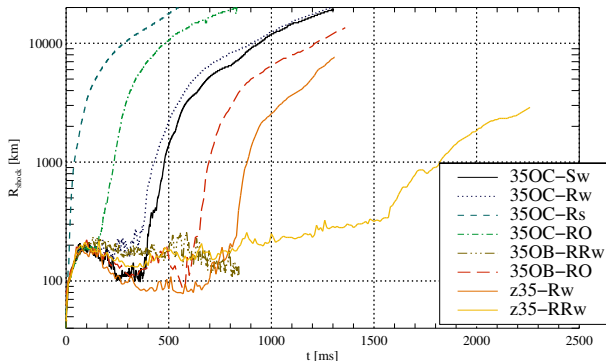
# Model 35OC-Sw: neutrino-driven explosion

- ▶ explosion after a phase of shock stagnation
- ▶ ejecta energy and mass increases stronger than any other model except for 35OC-Rs
- ▶ neutrino heating and hydrodynamic instabilities
- ▶ shock expansion starts when the interface of the iron core is accreted
- ▶ very oblate ejecta
- ▶ PNS (soon to be



# 35OC-Rw: faster rotation

- ▶ explosion after a phase of shock stagnation
- ▶ very asymmetric neutrino heating
- ▶ again, interface triggers shock expansion
- ▶ quite jet-like ejecta
- ▶ PNS very prolate

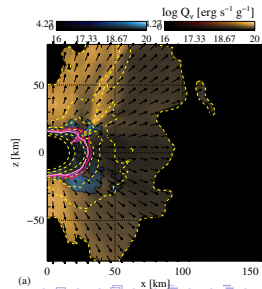
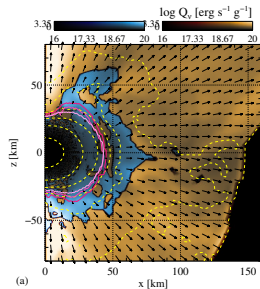
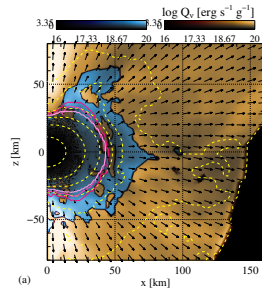
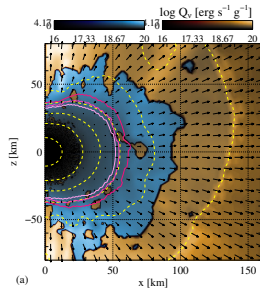


(a)



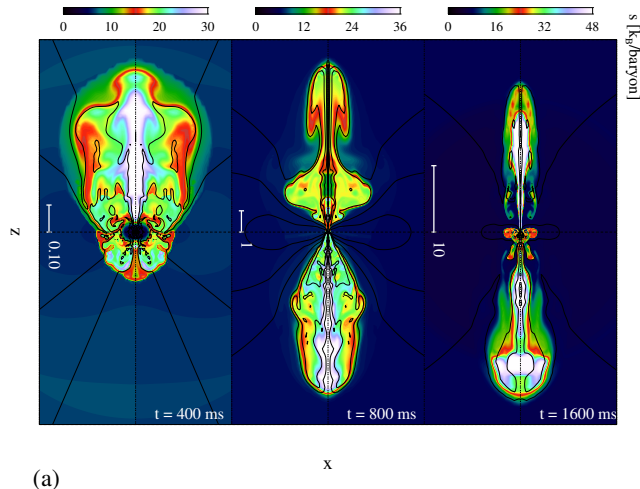
# 35OC-Rw: faster rotation

- ▶ explosion after a phase of shock stagnation
- ▶ very asymmetric neutrino heating
- ▶ again, interface triggers shock expansion
- ▶ quite jet-like ejecta
- ▶ PNS very prolate



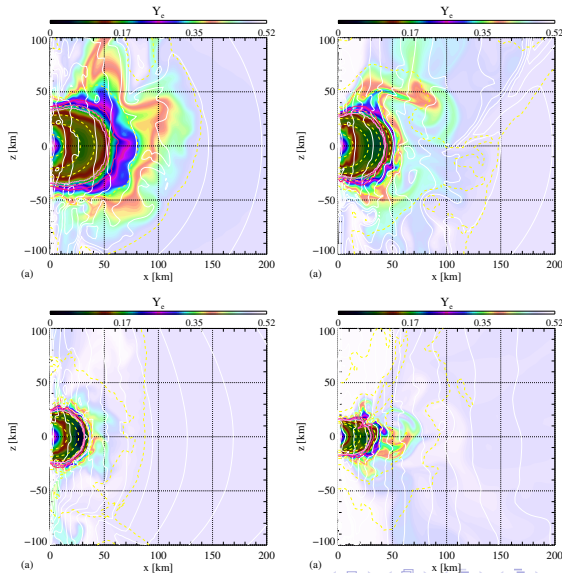
# 35OC-Rw: faster rotation

- ▶ explosion after a phase of shock stagnation
- ▶ very asymmetric neutrino heating
- ▶ again, interface triggers shock expansion
- ▶ quite jet-like ejecta
- ▶ PNS very prolate



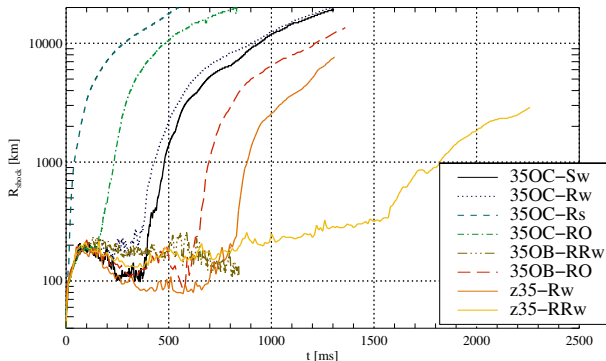
# 35OC-Rw: faster rotation

- ▶ explosion after a phase of shock stagnation
- ▶ very asymmetric neutrino heating
- ▶ again, interface triggers shock expansion
- ▶ quite jet-like ejecta
- ▶ PNS very prolate



# 35OB-RRw: failed explosion

- ▶ no explosion occurs at all
- ▶ very asymmetric neutrino emission, but insufficient to overcome high mass accretion rate
- ▶ intense activity of convection
- ▶ PNS very prolate, almost a torus

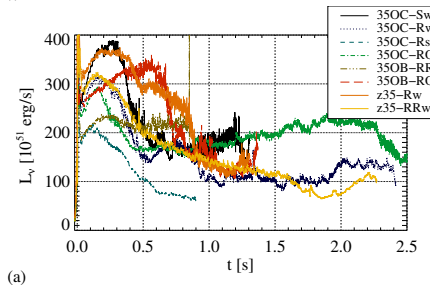
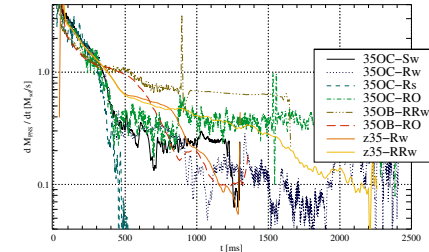


(a)



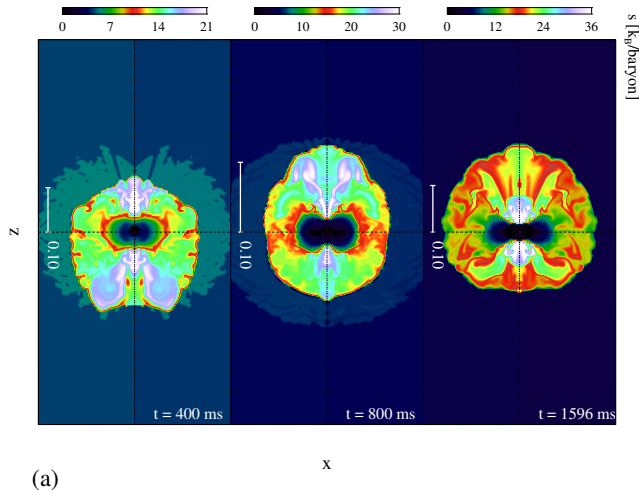
# 35OB-RRw: failed explosion

- ▶ no explosion occurs at all
- ▶ very asymmetric neutrino emission, but insufficient to overcome high mass accretion rate
- ▶ intense activity of convection
- ▶ PNS very prolate, almost a torus



# 35OB-RRw: failed explosion

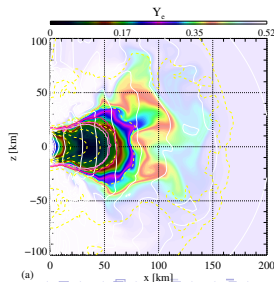
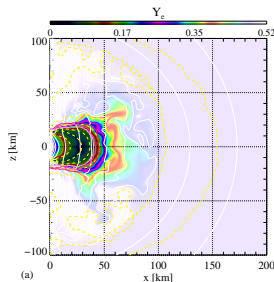
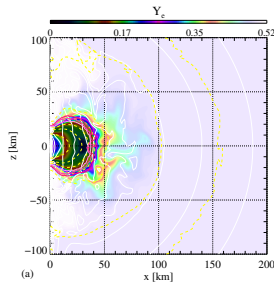
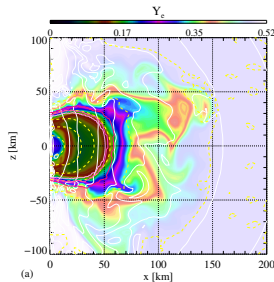
- ▶ no explosion occurs at all
- ▶ very asymmetric neutrino emission, but insufficient to overcome high mass accretion rate
- ▶ intense activity of convection
- ▶ PNS very prolate, almost a torus





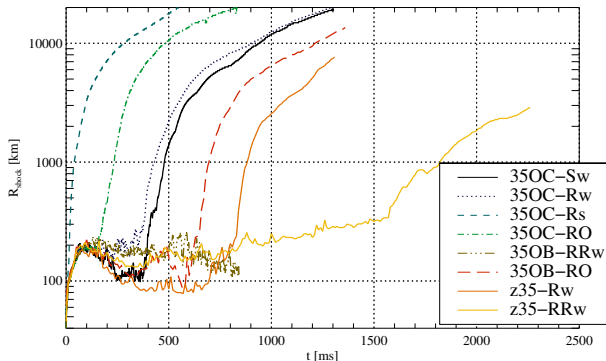
# 35OB-RRw: failed explosion

- ▶ no explosion occurs at all
- ▶ very asymmetric neutrino emission, but insufficient to overcome high mass accretion rate
- ▶ intense activity of convection
- ▶ PNS very prolate, almost a torus



# 35OC-Rs: magneto-rotational explosion

- ▶ very prompt explosion
- ▶ magnetic fields launch jets long before neutrinos can achieve anything
- ▶ PNS very prolate
- ▶ PNS stops to grow and even loses mass after 400 ms, i.e., no BH collapse anytime soon

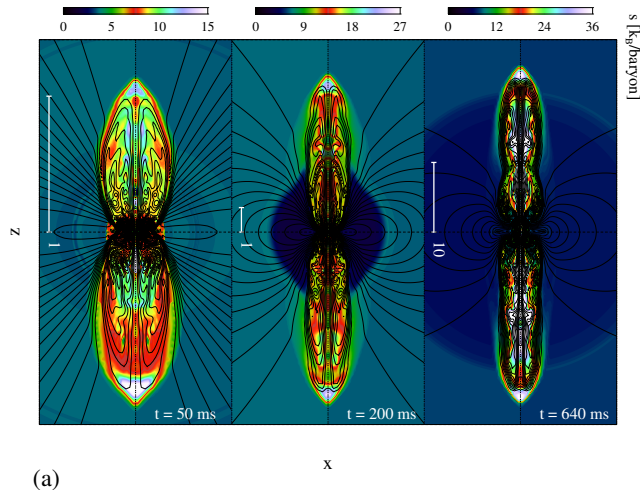


(a)



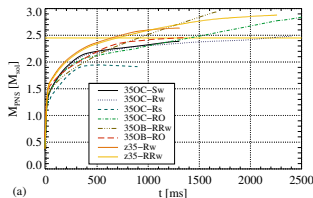
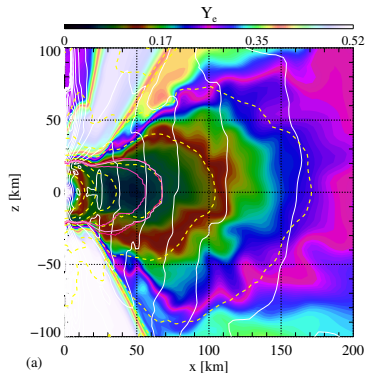
# 35OC-Rs: magneto-rotational explosion

- ▶ very prompt explosion
- ▶ magnetic fields launch jets long before neutrinos can achieve anything
- ▶ PNS very prolate
- ▶ PNS stops to grow and even loses mass after 400 ms, i.e., no BH collapse anytime soon



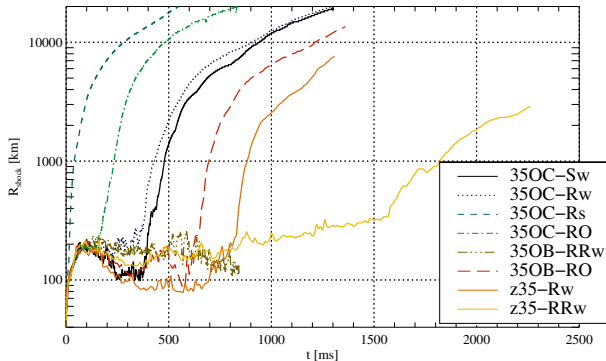
# 35OC-Rs: magneto-rotational explosion

- ▶ very prompt explosion
- ▶ magnetic fields launch jets long before neutrinos can achieve anything
- ▶ PNS very prolate
- ▶ PNS stops to grow and even loses mass after 400 ms, i.e., no BH collapse anytime soon



# 35OC-RO: the original magnetic field

- ▶ intermediate case between 35OC-Rs and 35OC-Rw
- ▶ explosion has a considerable magnetic contribution
- ▶ indications of MRI
- ▶ PNS reaches very high masses but prevented from collapse for a long time by centrifugal forces

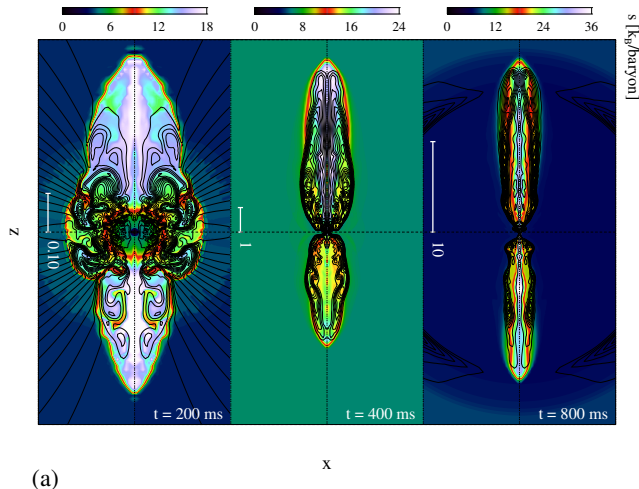


(a)



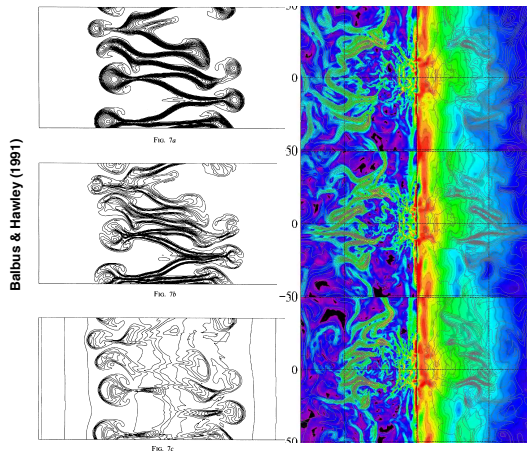
# 35OC-RO: the original magnetic field

- ▶ intermediate case between 35OC-Rs and 35OC-Rw
- ▶ explosion has a considerable magnetic contribution
- ▶ indications of MRI
- ▶ PNS reaches very high masses but prevented from collapse for a long time by centrifugal forces



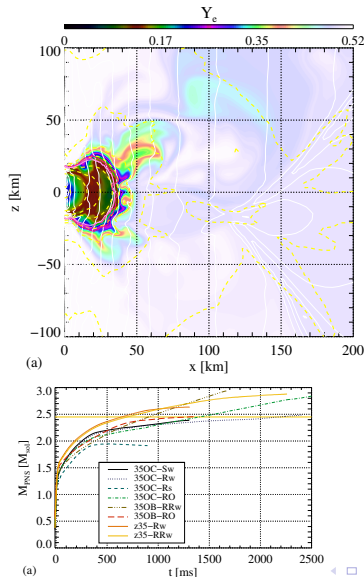
# 35OC-RO: the original magnetic field

- ▶ intermediate case between 35OC-Rs and 35OC-Rw
- ▶ explosion has a considerable magnetic contribution
- ▶ indications of MRI
- ▶ PNS reaches very high masses but prevented from collapse for a long time by centrifugal forces



# 35OC-RO: the original magnetic field

- ▶ intermediate case between 35OC-Rs and 35OC-Rw
- ▶ explosion has a considerable magnetic contribution
- ▶ indications of MRI
- ▶ PNS reaches very high masses but prevented from collapse for a long time by centrifugal forces





# Summary

- ▶ high-mass progenitors allow for very different outcomes
- ▶ less compact model easier to explode, accretion of interfaces where the mass flux drops facilitate explosions
- ▶ rotation decreases the  $\nu$  luminosity, but leads to predominantly polar emission and enhances heating there,
- ▶ which of the two opposite effects wins depends on the model
- ▶ magnetic fields do what they do best, namely produce jets
- ▶ possibility of GRB's: collapsars or proto-magnetars?



# Summary

- ▶ high-mass progenitors allow for very different outcomes
- ▶ less compact model easier to explode, accretion of interfaces where the mass flux drops facilitate explosions
- ▶ rotation decreases the  $\nu$  luminosity, but leads to predominantly polar emission and enhances heating there,
- ▶ which of the two opposite effects wins depends on the model
- ▶ magnetic fields do what they do best, namely produce jets
- ▶ possibility of GRB's: collapsars or proto-magnetars?

## Follow-up work

- ▶ quite different thermodynamical conditions  $\rightarrow$  differences in nucleosynthesis
- ▶ very strong emitters of GW
- ▶ long-term evolution: propagation through the envelope and break-out signal
- ▶ most work to be done, of course, is going to 3d